

Steamboat Square Revitalization Phase 2

RESIDENT MEETING #2



Jan 15, 2025

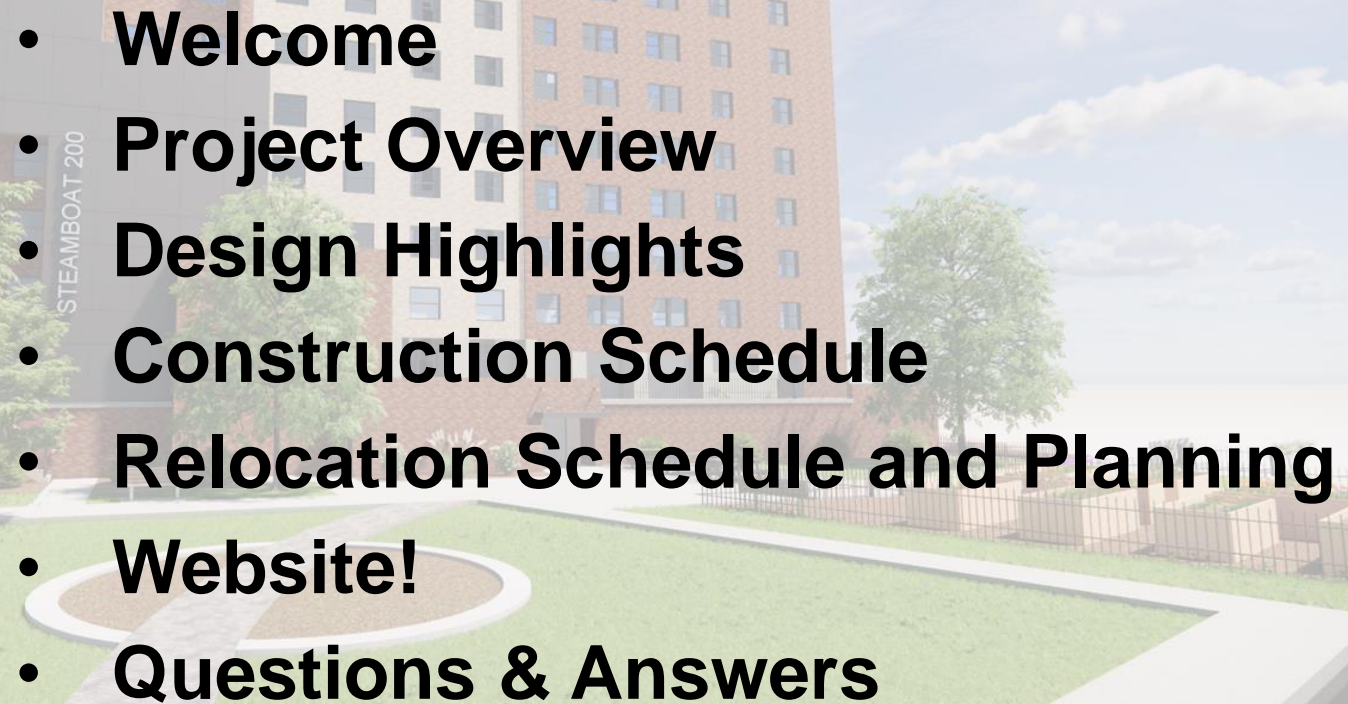


Edgemere Real Estate
Development
Consulting
Development Inc.

SWBR

Agenda

2

- 
- **Welcome**
 - **Project Overview**
 - **Design Highlights**
 - **Construction Schedule**
 - **Relocation Schedule and Planning**
 - **Website!**
 - **Questions & Answers**

Project Overview

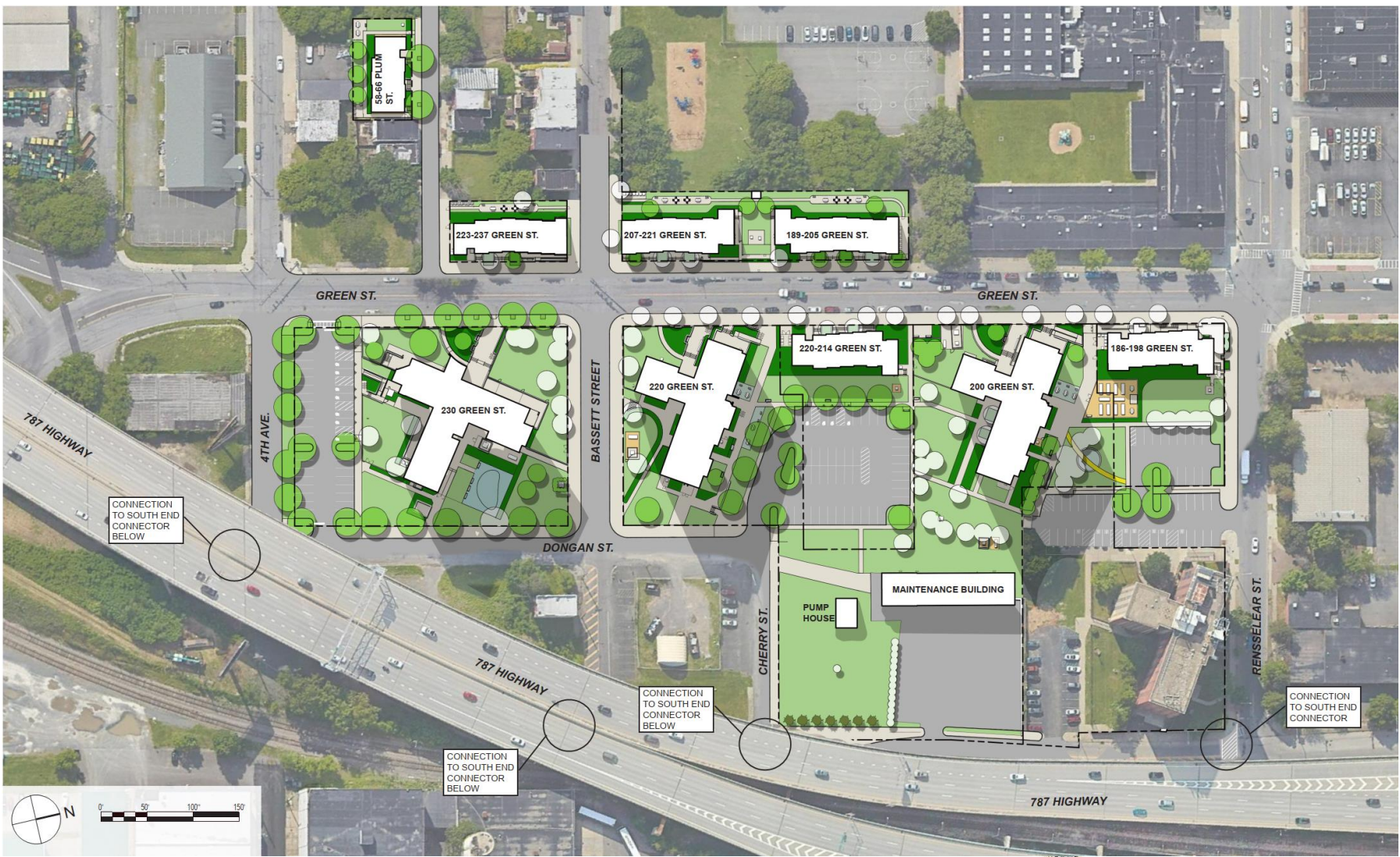
3



Design Highlights

- Project Scope

4



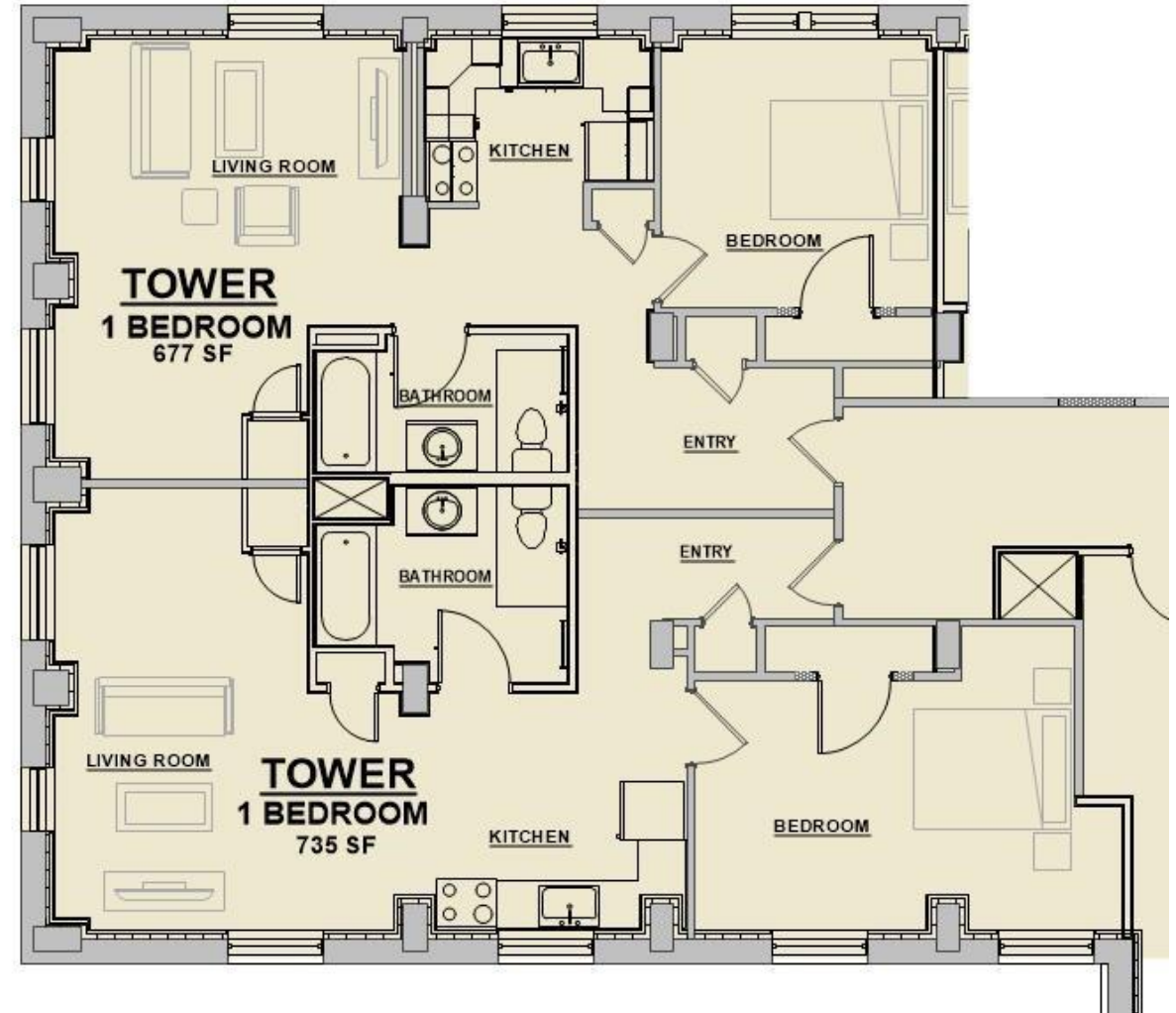
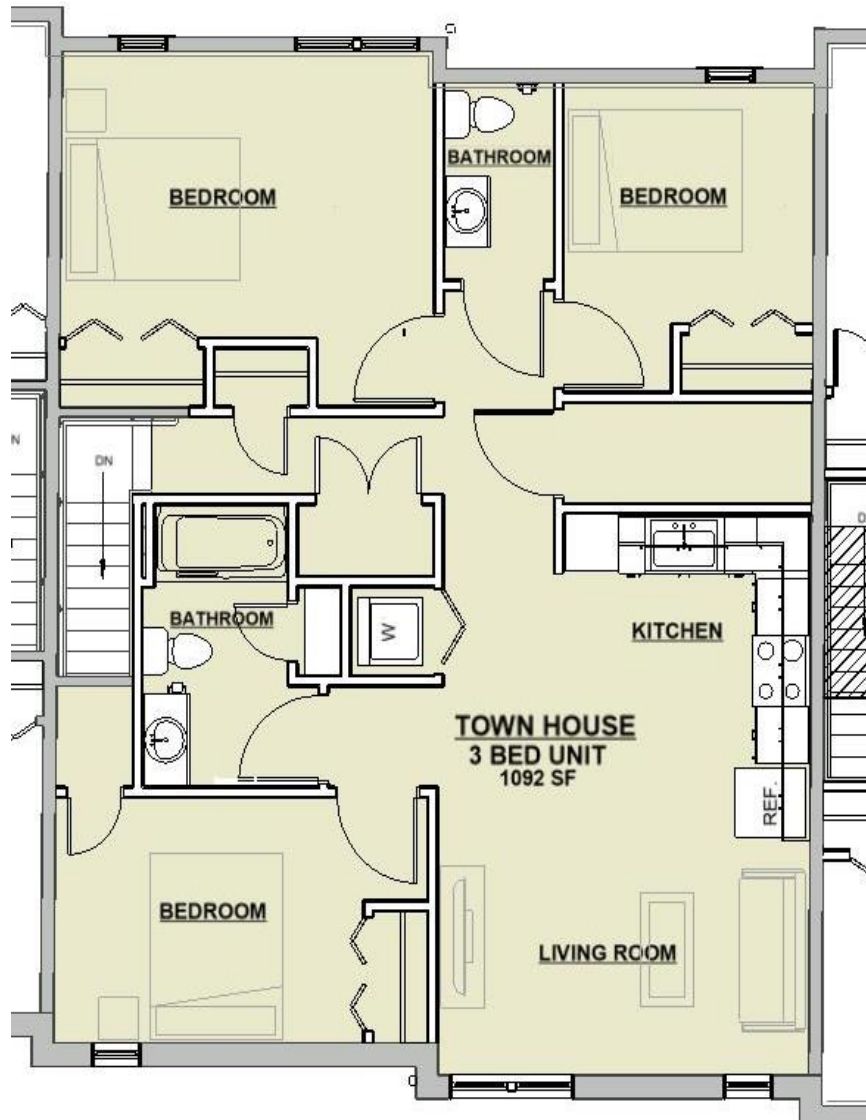
Design Highlights

- **Tenant Amenities**
 - ✓ **New Accessible Elevator in each Tower**
 - ✓ **New Air-conditioned units, energy efficient with fresh air**
 - ✓ **New Finishes through-out**
 - ✓ **New Appliances**
 - ✓ **New Security Systems**
 - ✓ **New Laundry Facilities**
 - ✓ **New Accessible Units totaling 5%**



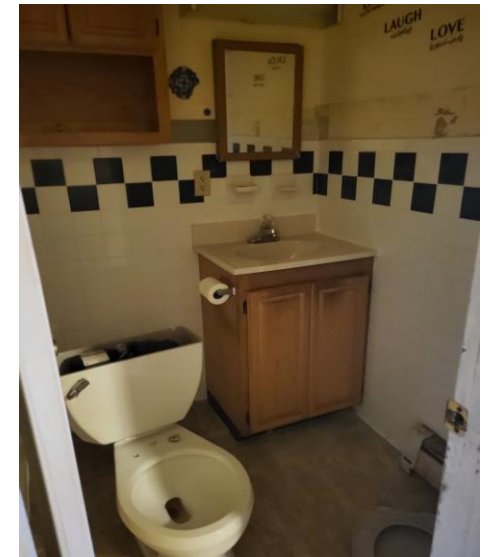
Design Highlights – Typical Unit Plans

6



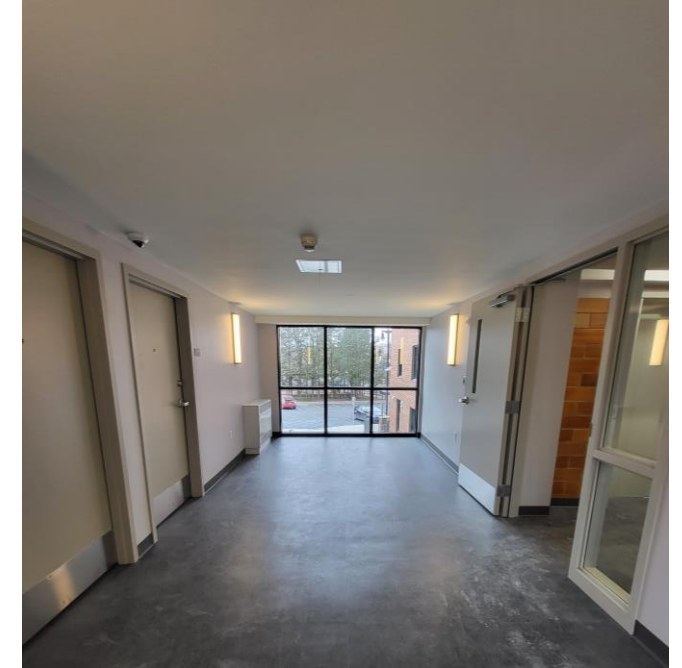
Design Highlights

- Before Photos



Design Highlights

- Completed Work, After Photos⁸



Design Highlights

9



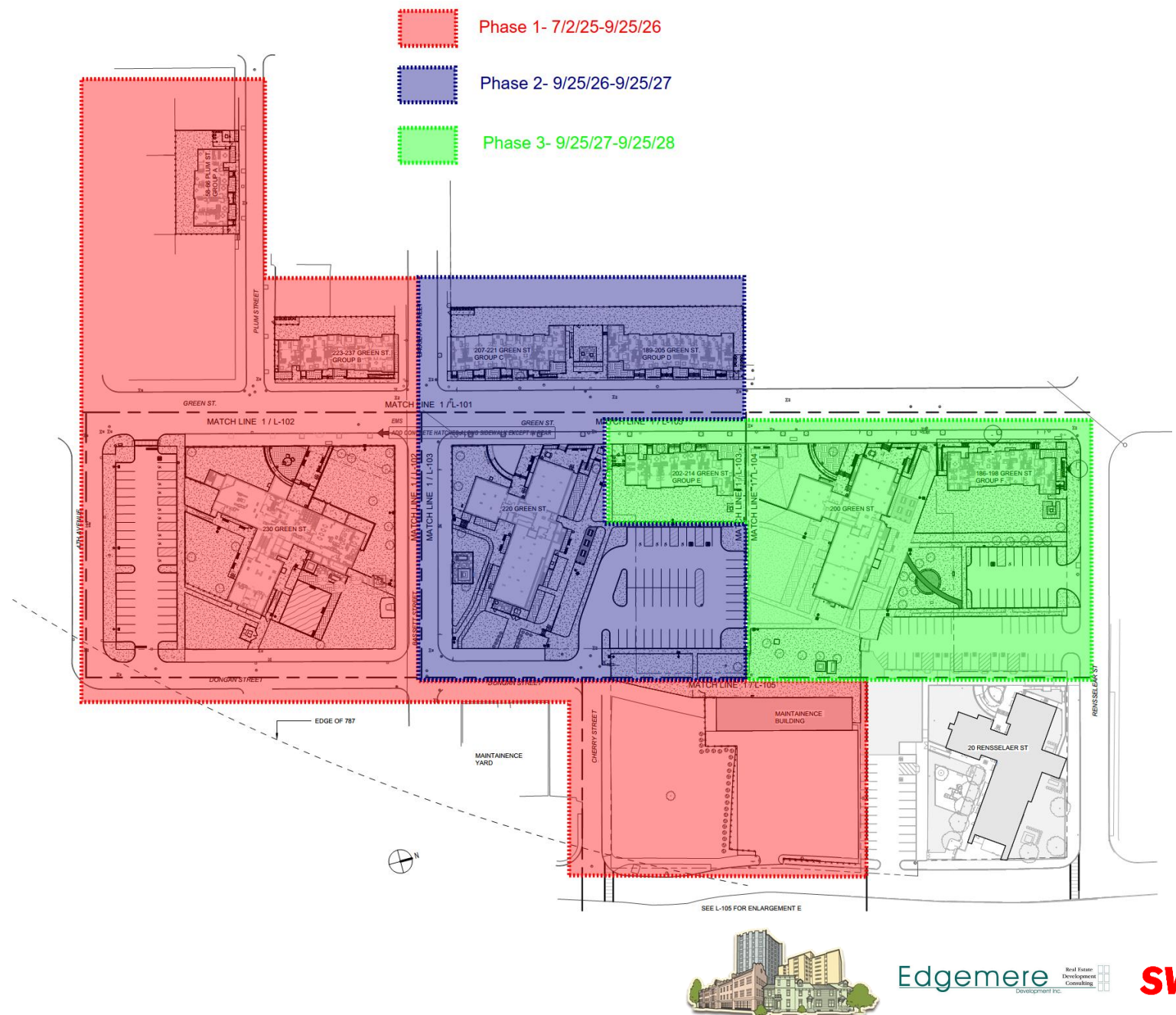
AHA Steamboat Square Phase 2



Edgemere Real Estate Development Consulting

SWBR

Construction Schedule



Relocation Schedule and Planning

11

- **Introduction**
- **What you should expect**
 - **Notices**
 - **One-on-One Meetings**
- **Schedule**



In Closing

12



Positively impacting lives through meaningful design.



ROCHESTER
387 E. Main Street
Rochester, N.Y.
(585) 232-8300

SYRACUSE
309 South Franklin Street
Syracuse, NY 13202
(315) 488-5635

TROY
283 River Street
Troy, NY 12180
(518) 618-0900

SWBR.COM

SWBR