



CLEVELAND PUBLIC LIBRARY  
FLEET BRANCH

CENTRAL SOUTHEAST SCHEMATIC  
DESIGN REVIEW

BIALOSKY



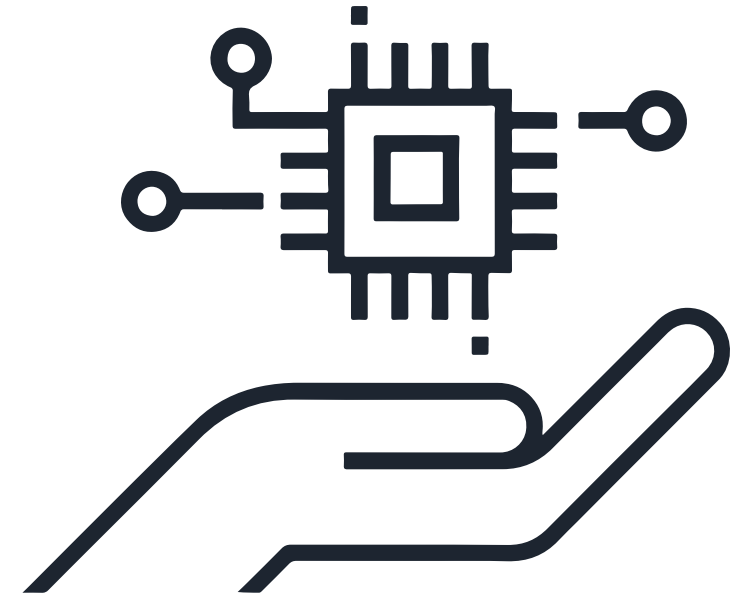
OCTOBER 28TH, 2025

# PROJECT INTRODUCTION

## What is the Project?



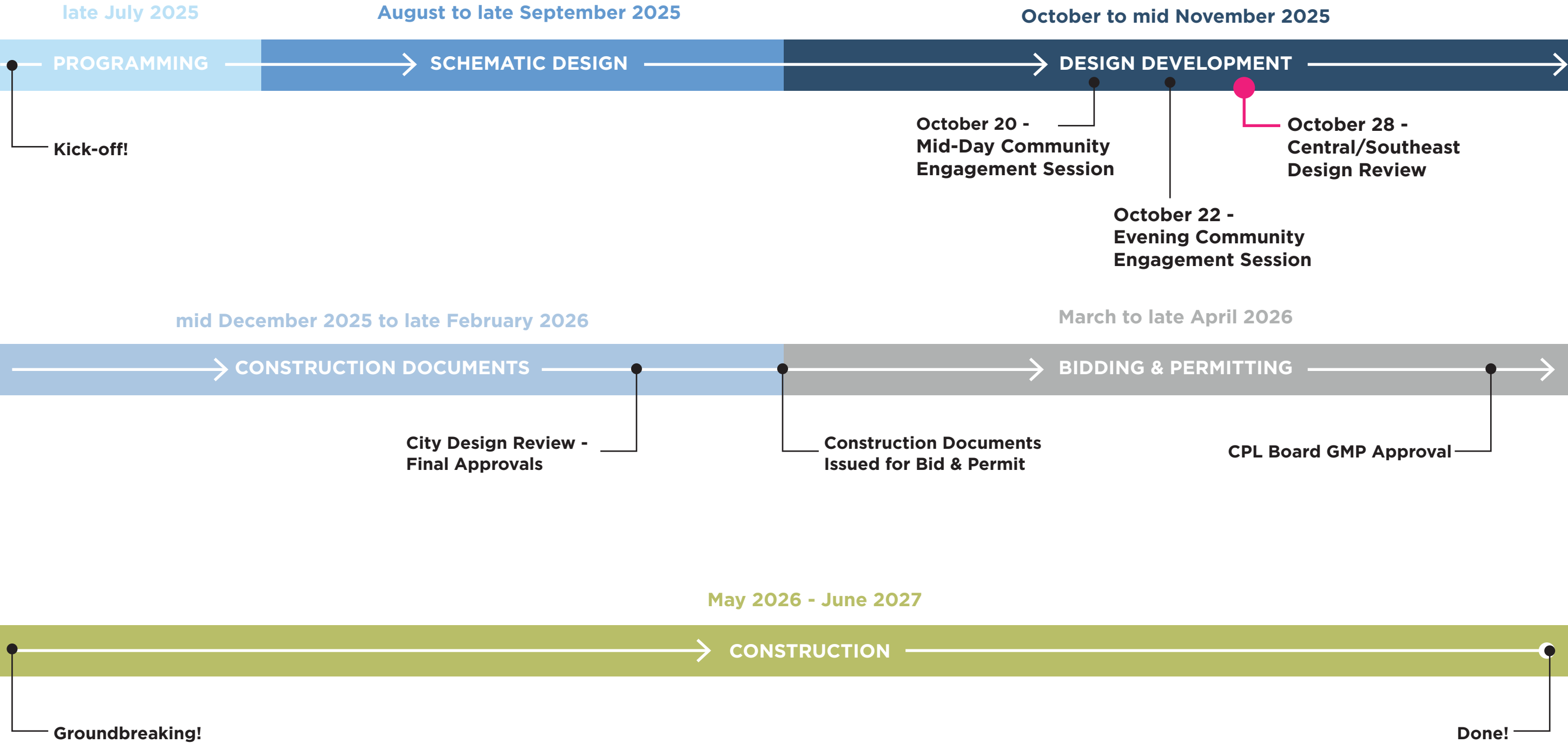
### **CPL FLEET RENOVATION + ADDITION**



### **WORKFORCE DEVELOPMENT + DIGITAL INNOVATION LAB**

This renovation and addition to the Fleet Library focuses on its transformation into a flexible campus and community hub that responds to the urgent socioeconomic needs of those who live and work in its service area while celebrating the resilience and potential of the Broadway-Slavic Village neighborhood. The existing 8,900 sf branch will be entirely renovated with an 800 sf expansion. The renovation will include: a new state-of-the-art computer lab space; a digital Innovation Lab; the expansion and reconfiguration of the branch's existing meeting spaces; an interactive children's space; updated adult collections; new staff offices, and a new business center.

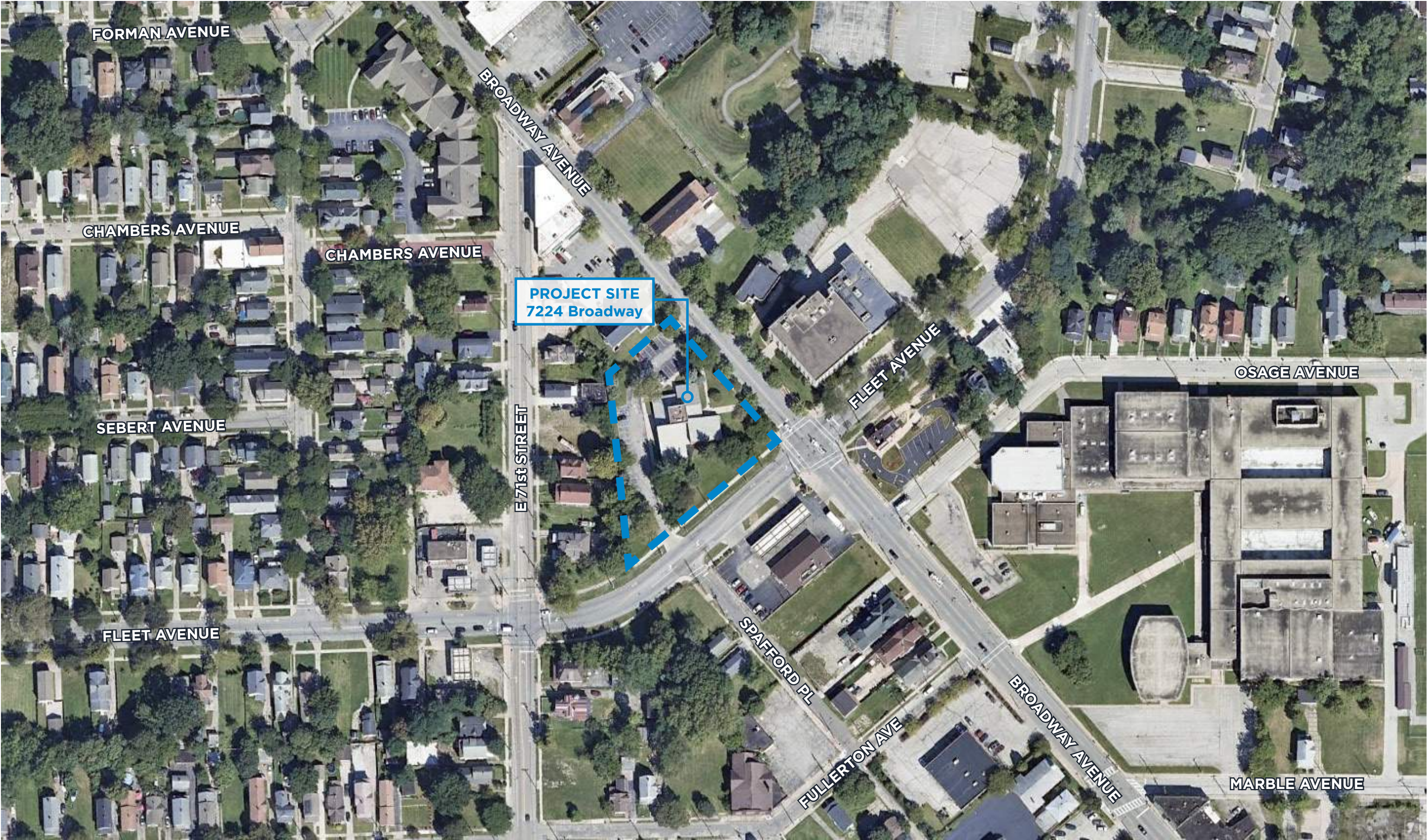
# Project Timeline





# PROJECT LOCATION







## Zoning and Code Analysis

Local Retail Business District (LR-C2)

Area District 'C' Height District '2'

Minimum 5ft. interior side lot  
setback or rear yard  
setback

11 parking spaces required  
27 parking spaces provided

BROADWAY AVENUE

Front yard  
setback 30ft.

Side street  
yard setback  
5ft.

FLEET AVENUE

Side street  
yard setback  
10ft. at rear  
1/3 of lot





across Broadway Ave. looking north



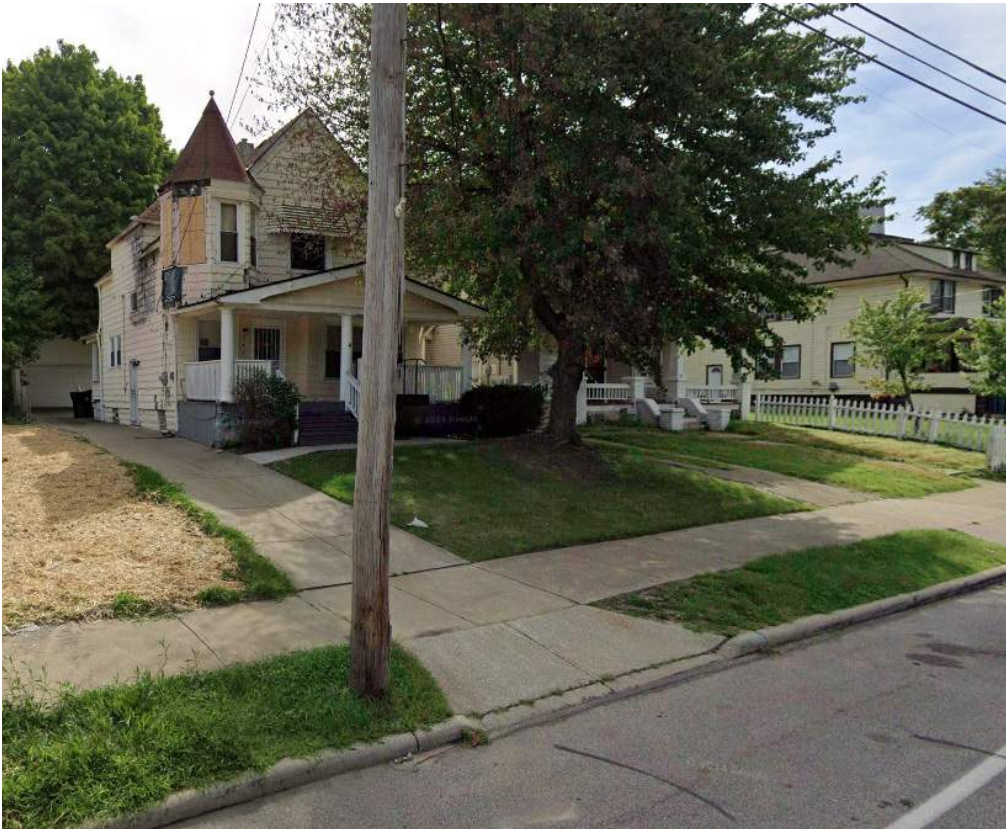
across Broadway Ave. looking north



adjacent property. looking south



homes along E71st Street



homes along E71st Street



across Fleet Ave. looking south





view approaching from Fleet / Broadway corner



view approaching front entry



view approaching from north



view approaching from north



view approaching rear entry

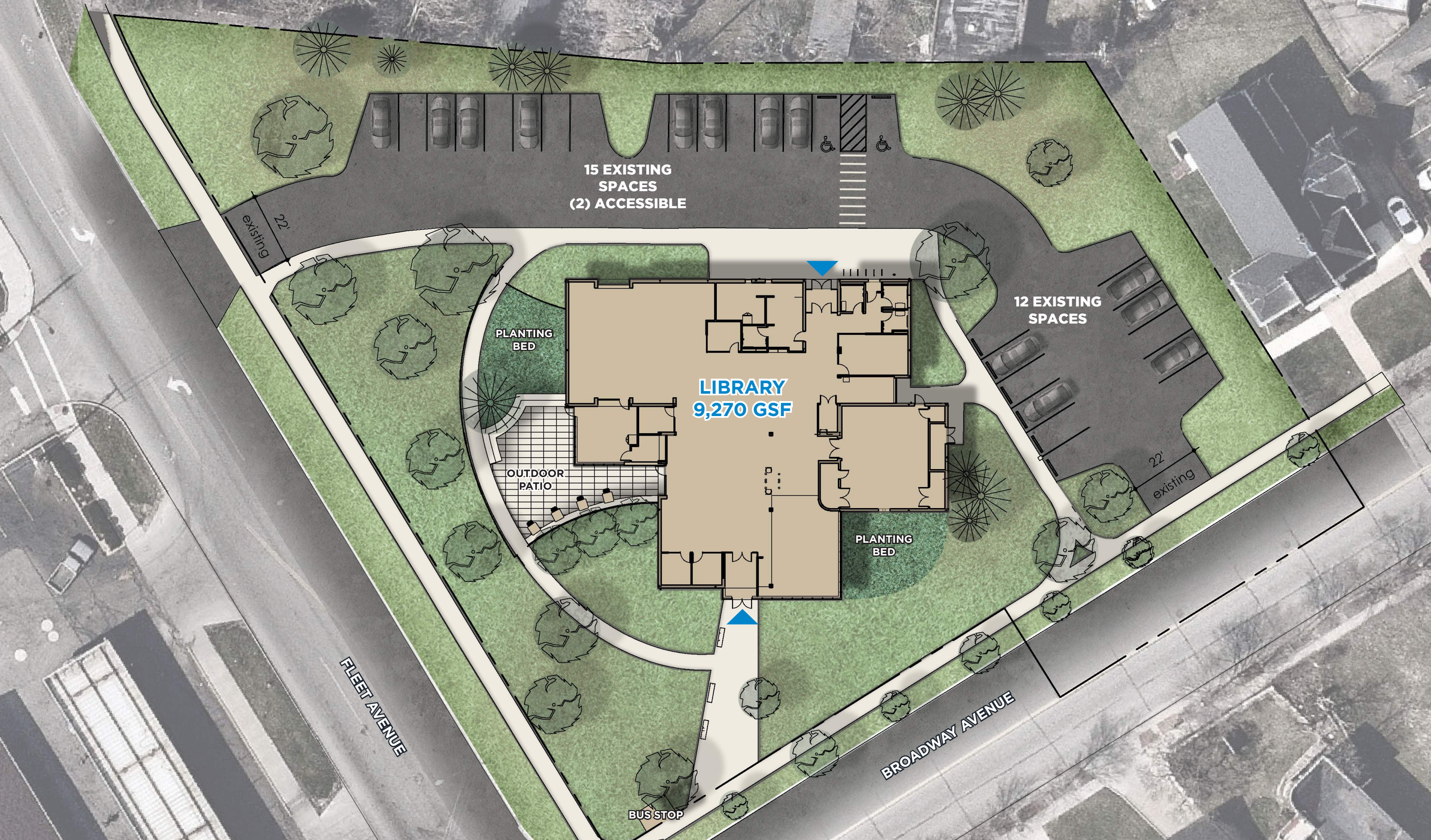


view approaching from south

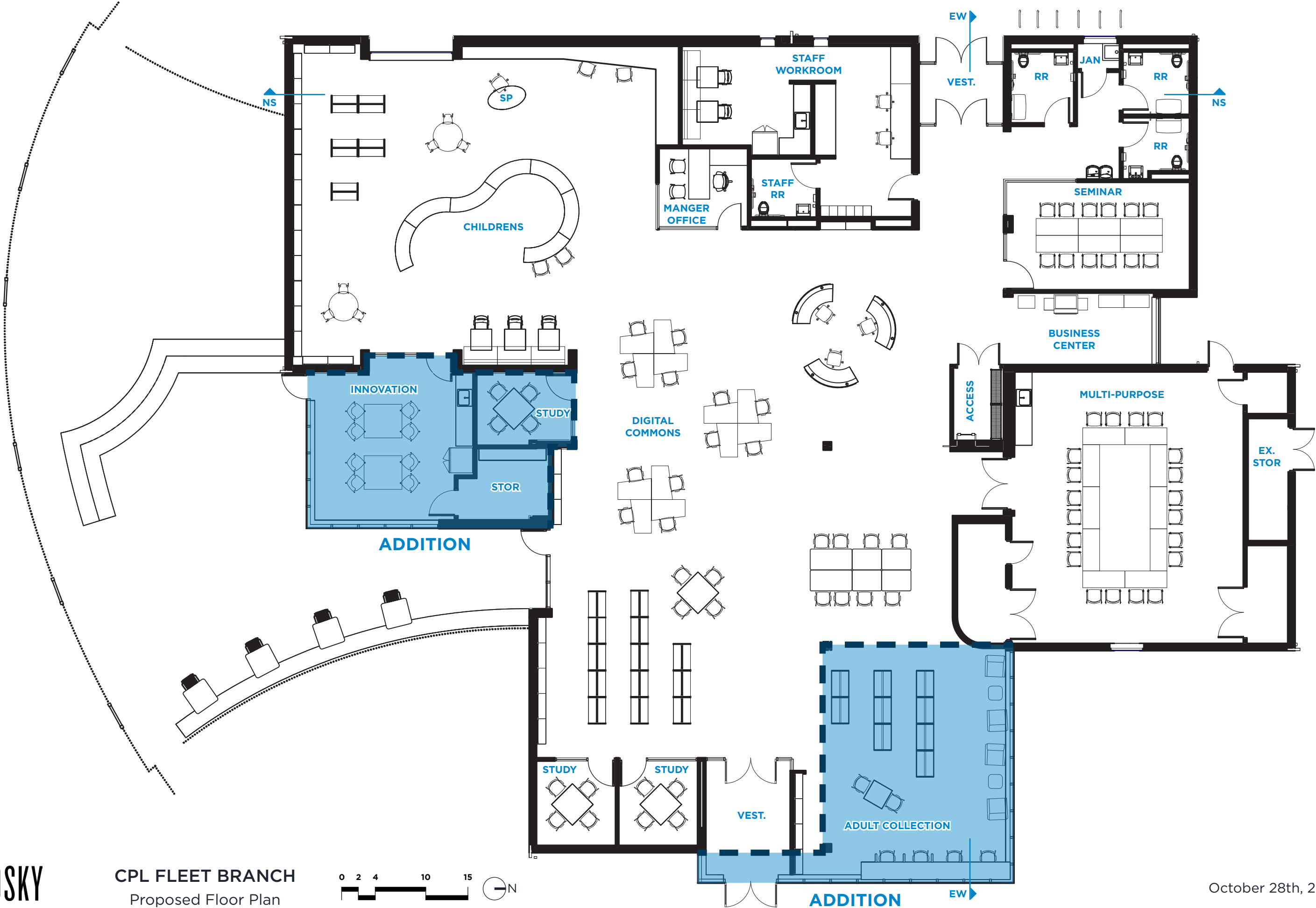


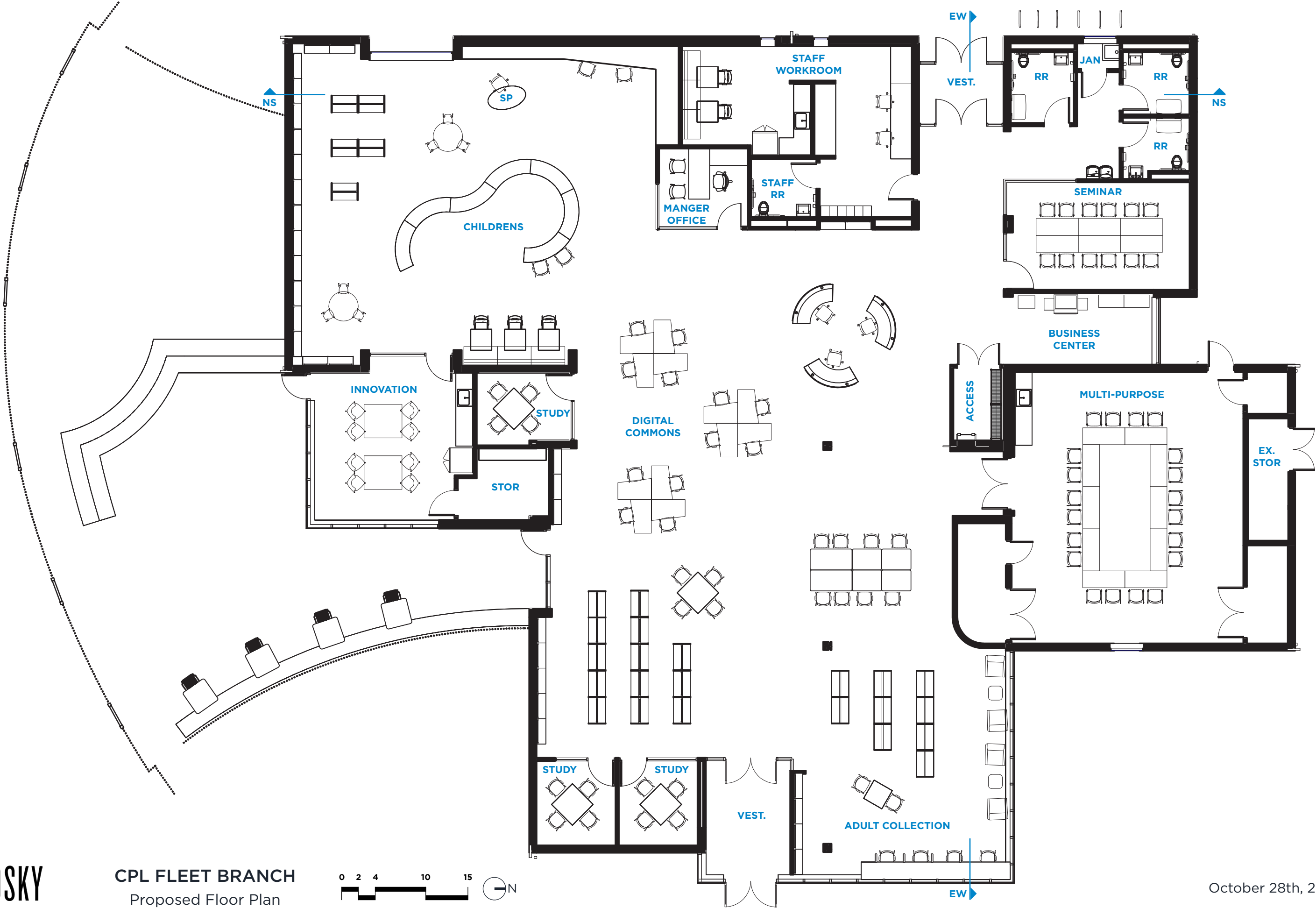
# PROPOSED SCHEMATIC DESIGN



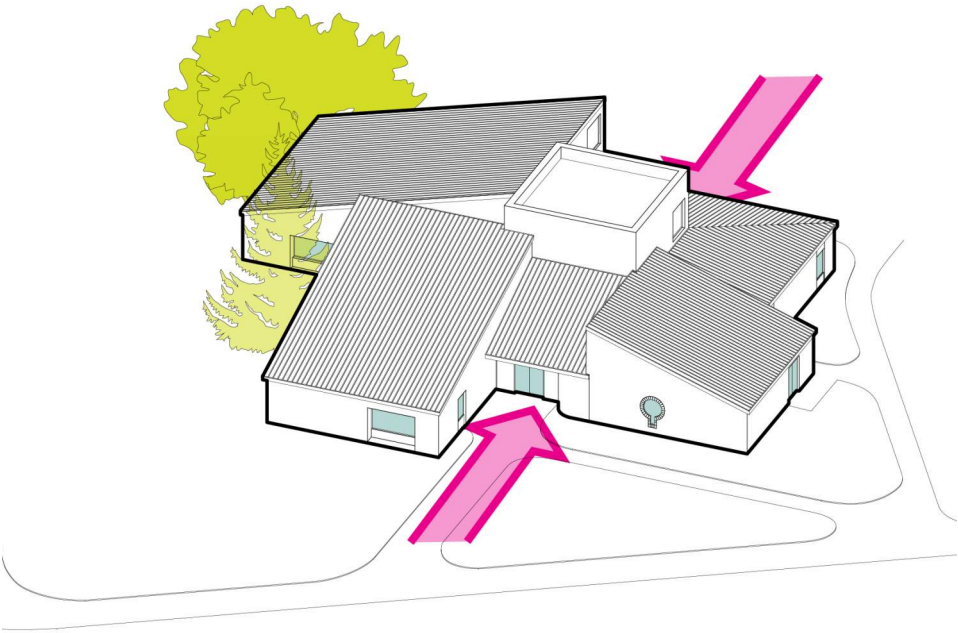




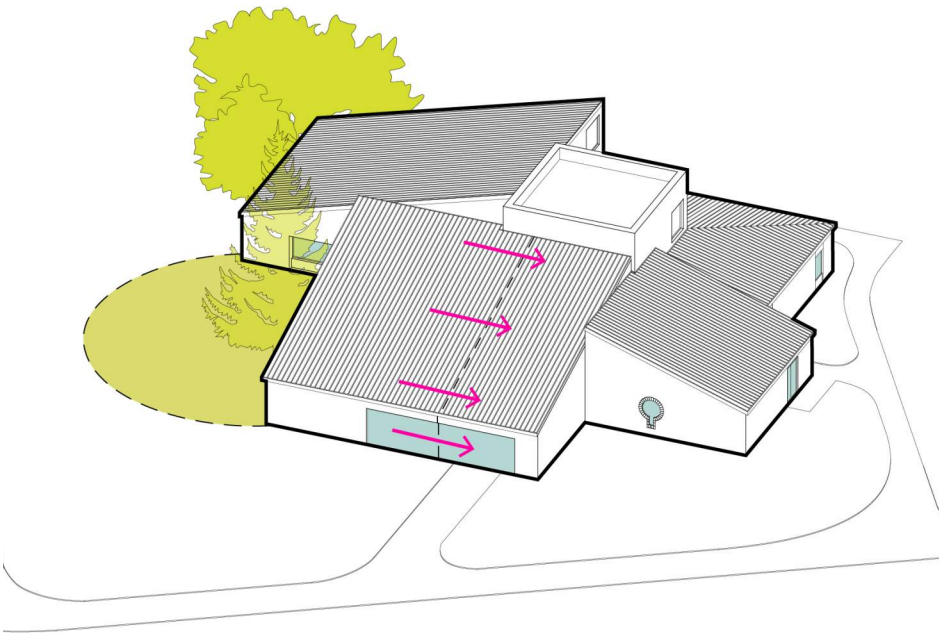




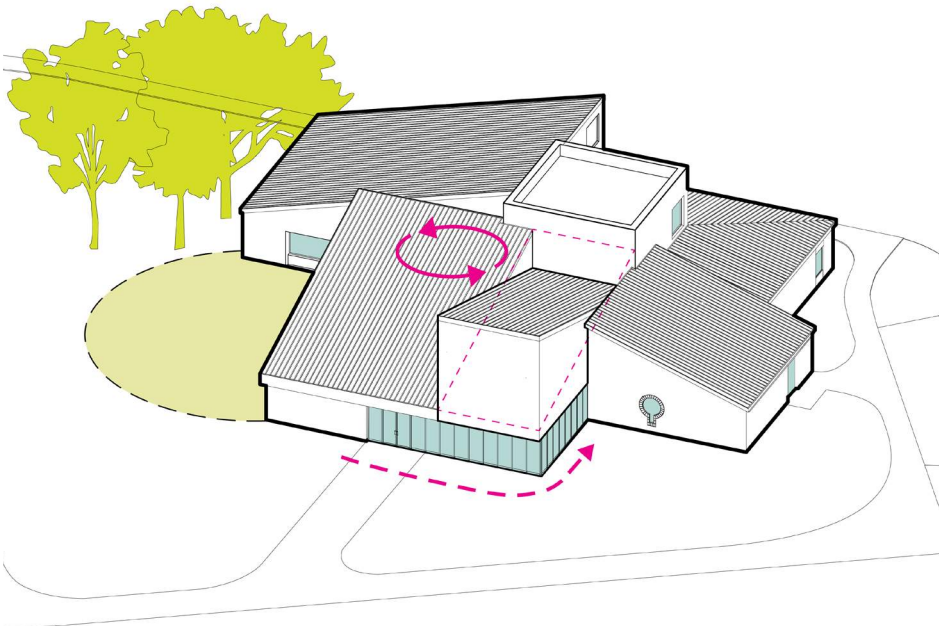
Massing Diagram



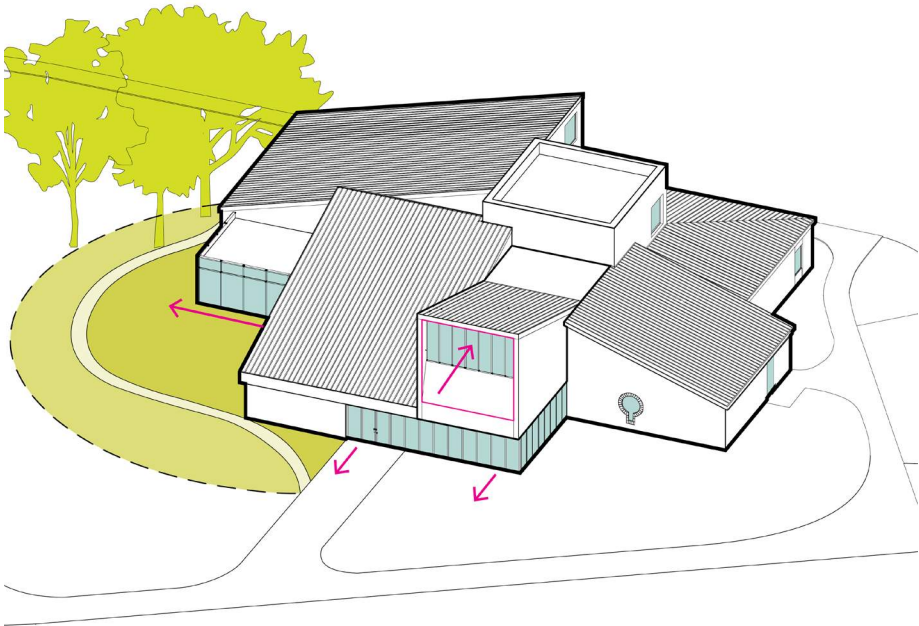
EXISTING



1 EXTEND



2 ROTATE



3 PUSH/PULL

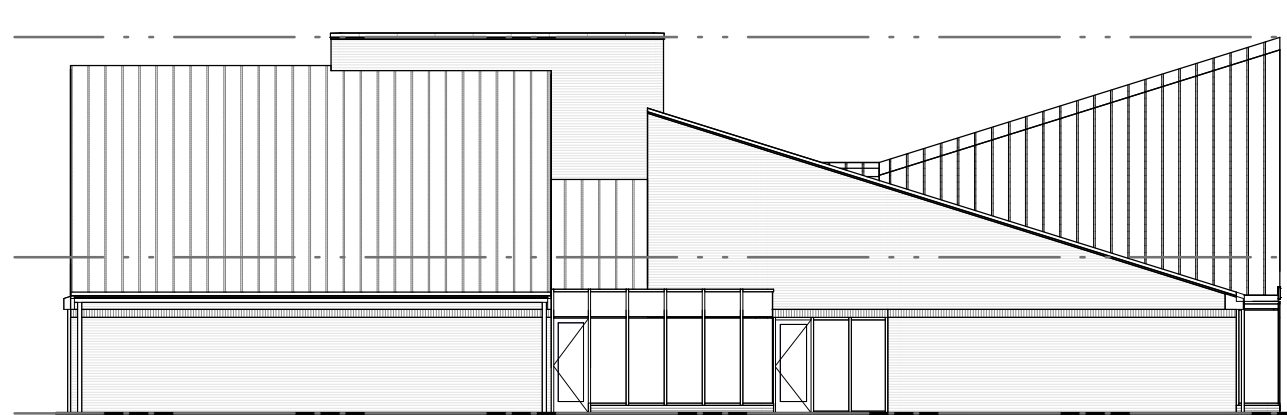




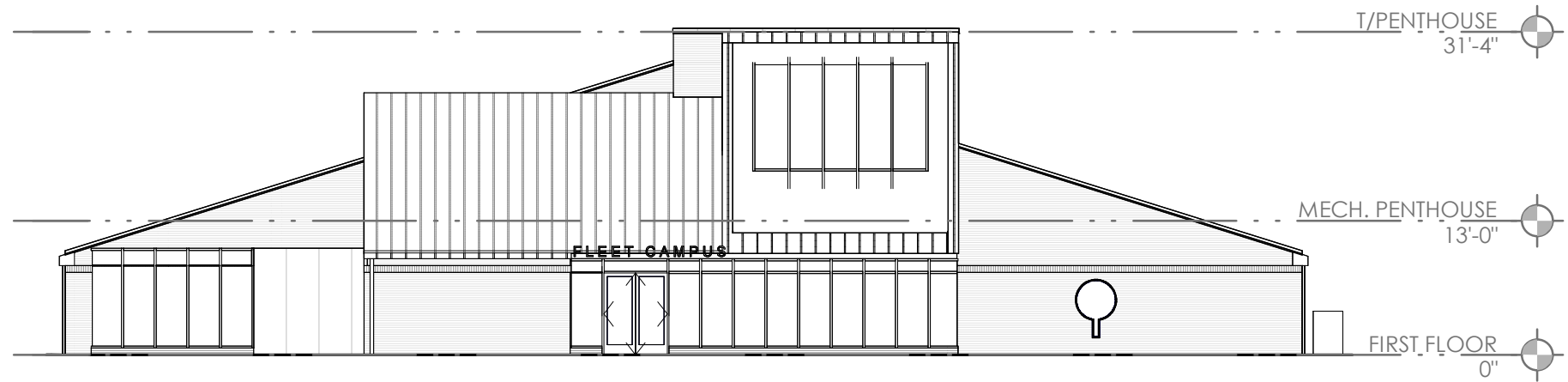




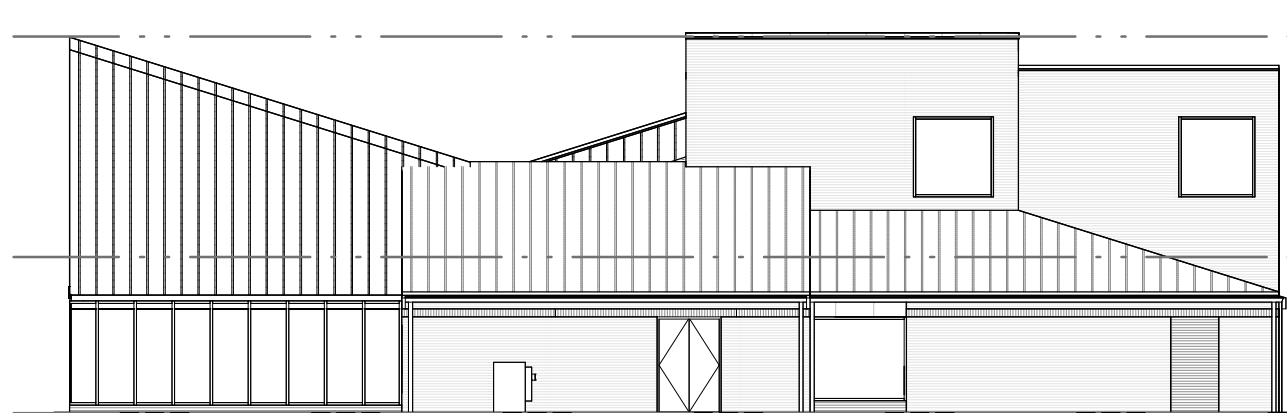




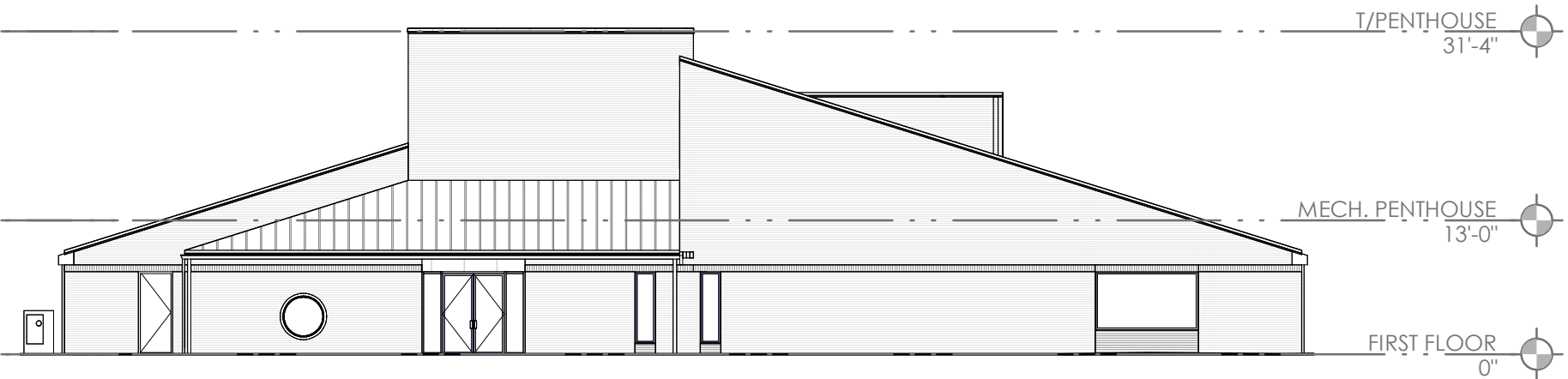
4 SOUTH ELEVATION  
1/16" = 1'-0"



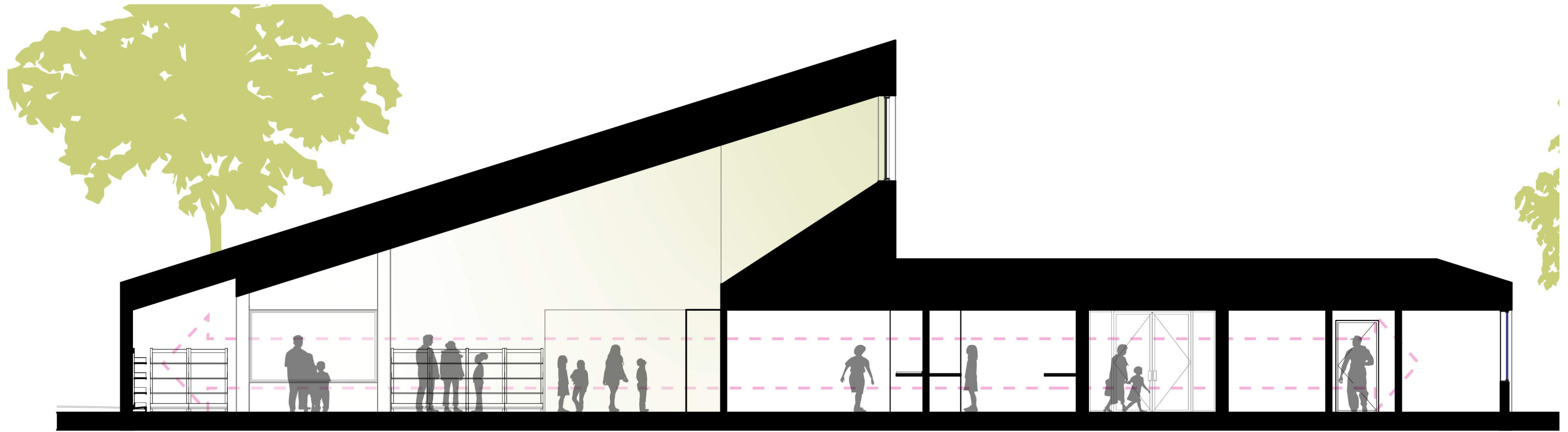
3 EAST ELEVATION  
1/16" = 1'-0"



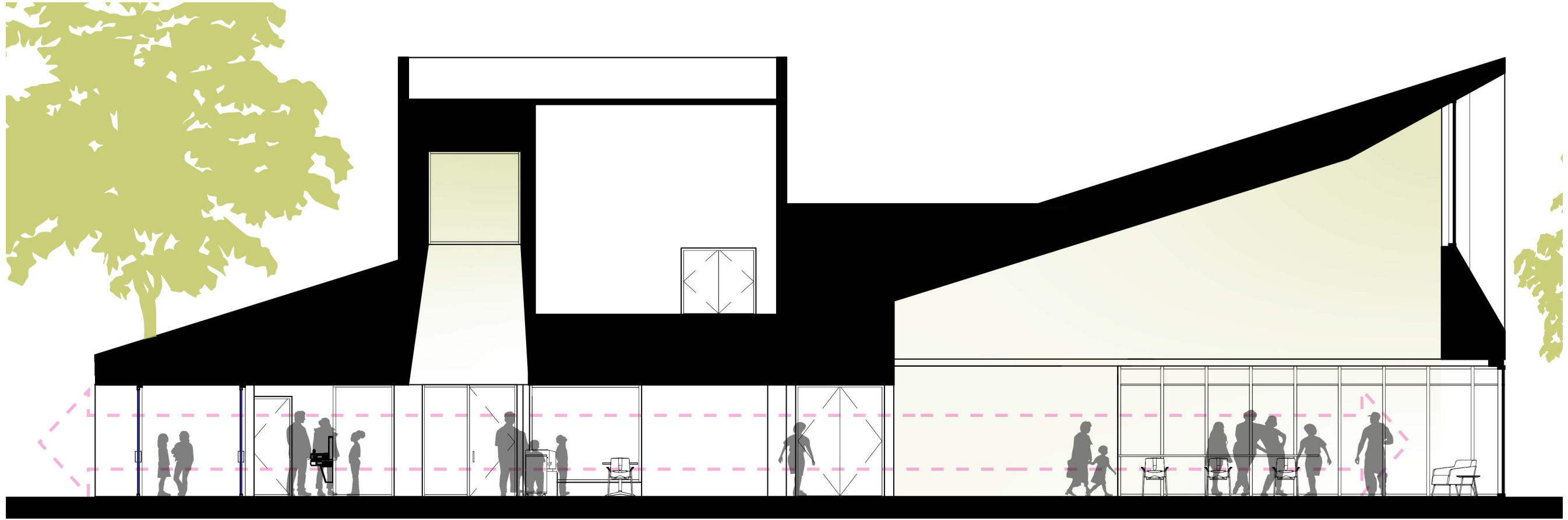
2 NORTH ELEVATION  
1/16" = 1'-0"



1 WEST ELEVATION  
1/16" = 1'-0"



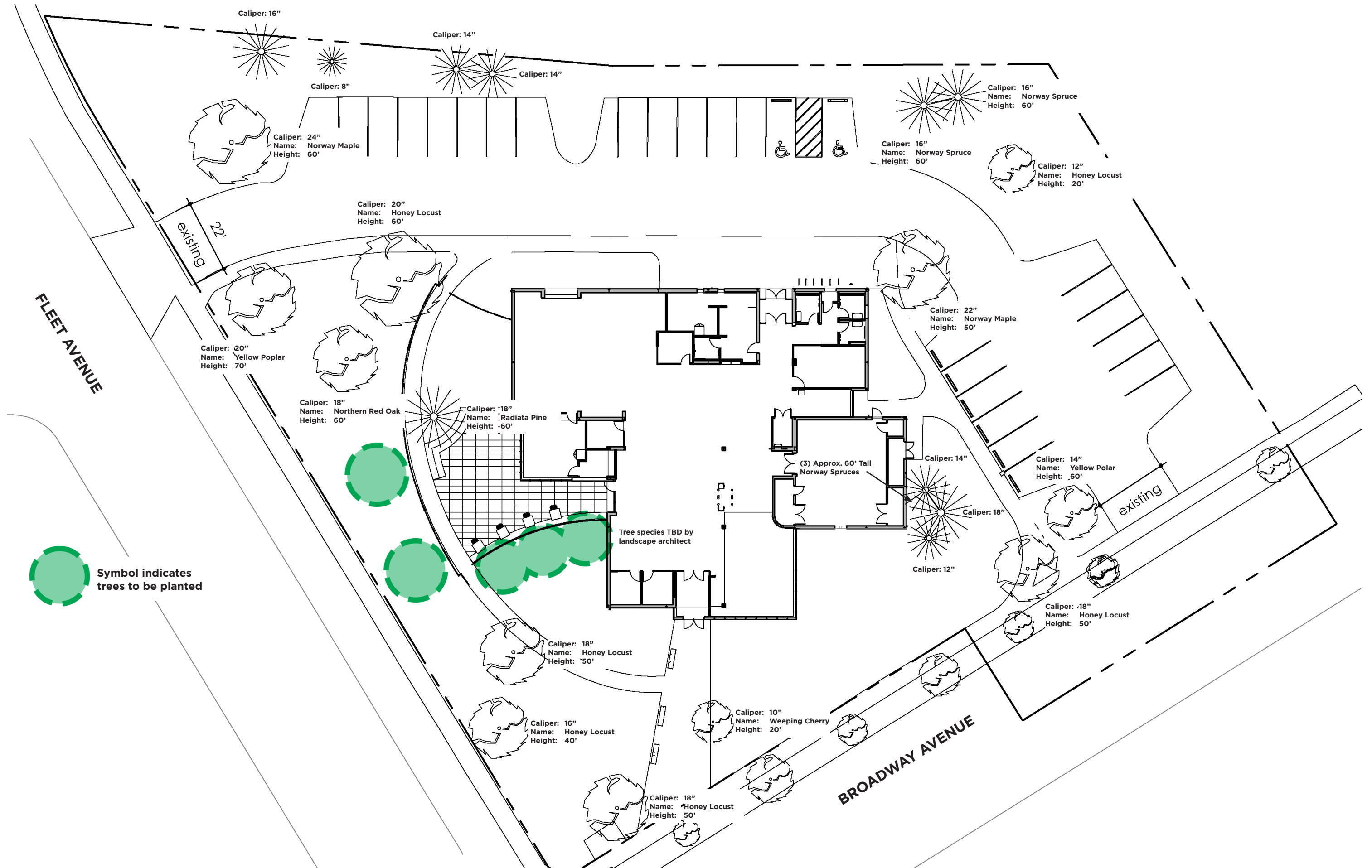
NORTH SOUTH SECTION



EAST WEST SECTION







**CPL FLEET BRANCH**  
TREE PRESERVATION PLAN



October 28th, 2025 20



**1. EXPOSED AGGREGATE SIDEWALK**  
MEDIUM SEEDED  
EXPOSED AGGREGATE  
FINISH



**2. PAVERS**  
COLOR: TBD  
LOCATION:  
OUTDOOR PATIO  
(SOUTH)



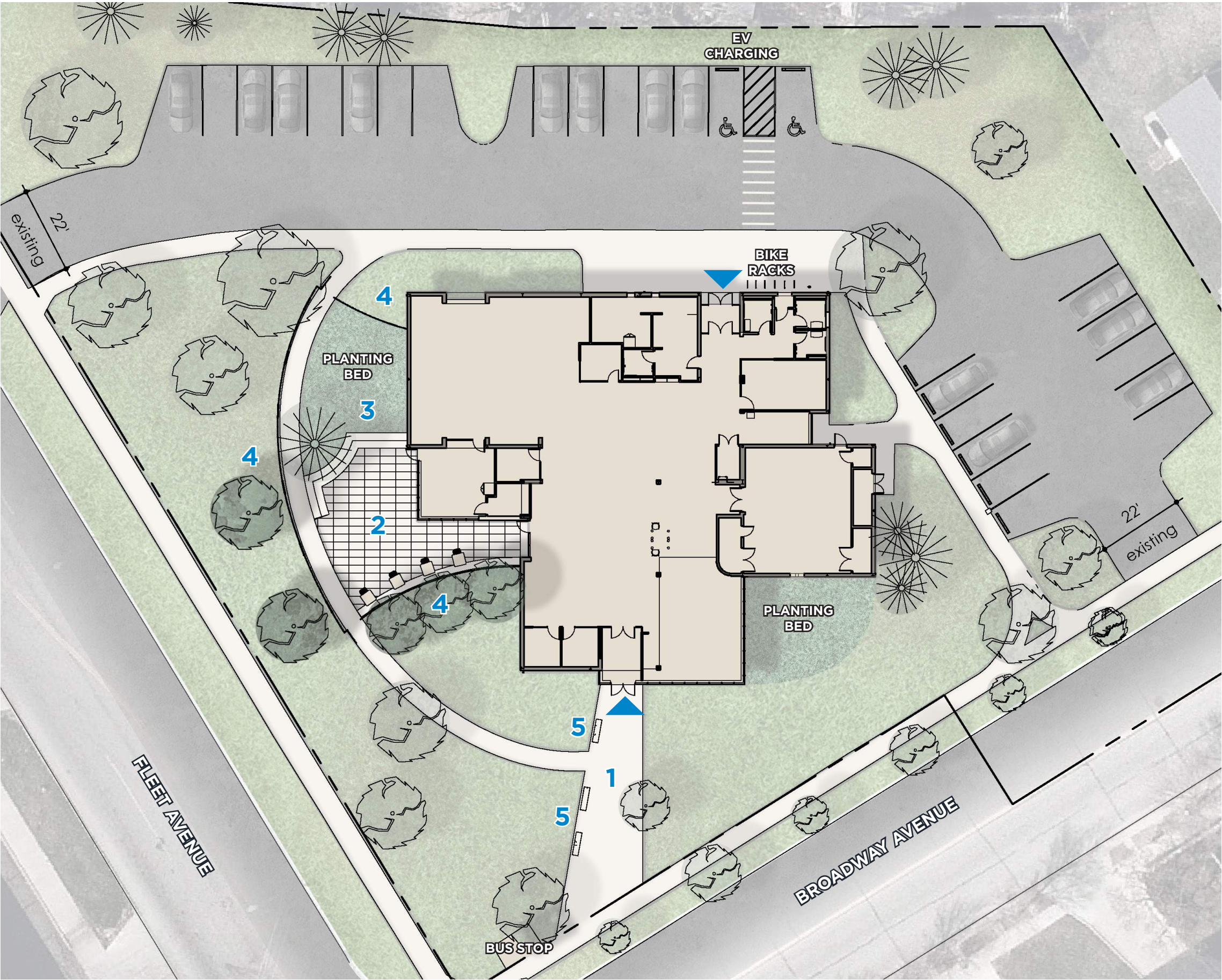
**3. PRECAST STEPS**  
LOCATION:  
OUTDOOR PATIO  
(SOUTH)



**4. 6'-0" TALL DECORATIVE FENCING**  
STYLE: TBD



**5. SITE SEATING**





THANK YOU!

FLEET CAMPUS

