

Cedar Crest Village Planning Commission Work Session



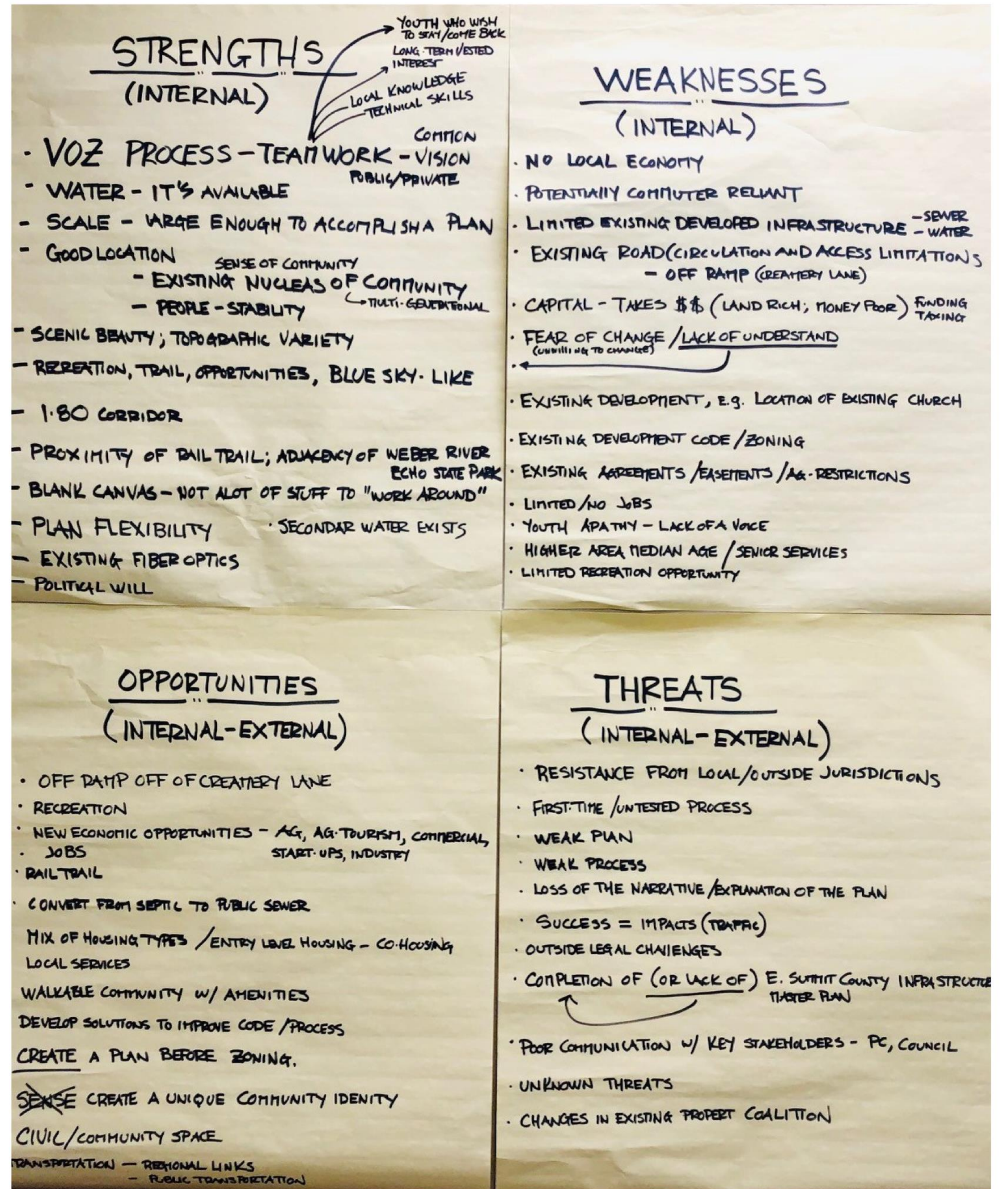


Goal for the meeting

1. *Connect the vision statements from the Cedar Crest Committee where the Planning Commission can make a recommendation to County Council*
2. *Review and recommend on the Community Structure Plan Map, Ordinance, and Design Standards.*
3. *Answer any questions from the previous meeting*
4. *Public Hearing on November 2, 2023*

Objectives

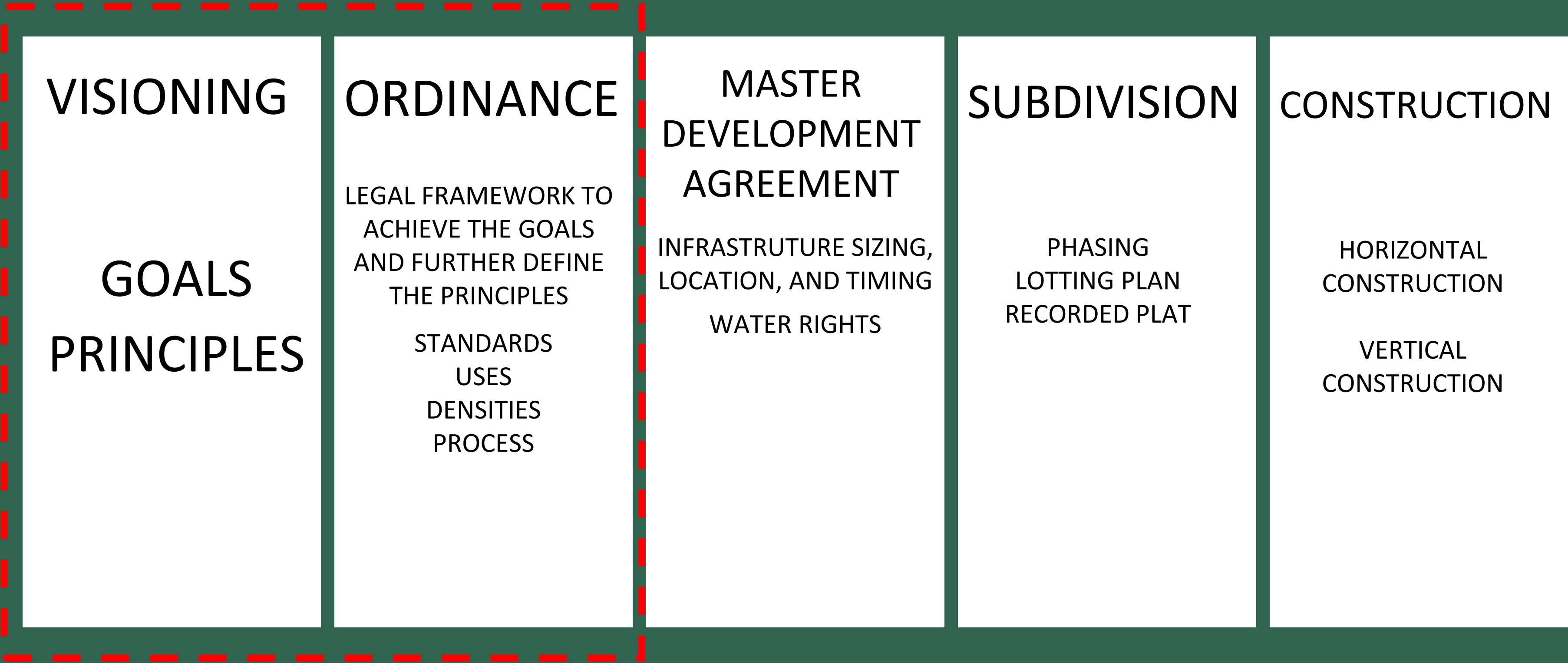
- Provide cost-efficient public and/or private infrastructure (streets, sidewalks and trails, water, and wastewater).
- Provide a range of housing opportunities, both in terms of housing types and affordability for a range of people from first time homeowners to seniors.
- Provide a connected and safe street system with associated sidewalks and trails enhancing pedestrian movement and safety between Village Residential neighborhoods, the Village Core and surrounding lands and uses.
- Provide space for local start-up businesses, live-work spaces, other commercial, businesses and services in a clustered Village Core with connections to surrounding Village Residential.
- Enhance local employment opportunities considering today's needs as well as anticipating the future.
- Reserve land and plan for civic and institutional uses, essential infrastructure and utilities, high speed broadband, future transit, trail connections, recreational opportunities, and community gathering spaces.
- Consider future constraints and opportunities and incorporate smart growth principles, such as energy efficient construction and water conservation measures.
- Cluster future growth in village core areas to allow open and agricultural lands to be maintained and protected.
- Allow for scenic view corridors, agricultural buffer areas, natural resources, ground water, waterways and wetlands, steep slopes, and other sensitive lands to be maintained, enhanced, and protected.
- At buildout, likely to occur over several decades, the Cedar Crest Village Overlay Land Use Plan is intended to guide inevitable growth and development to ensure that goals of the local landowners and communities are met.
- The Plan will need a strategy and mechanism to encourage and incentivize future development to occur within the Village or within a Village Growth Area Boundary area.



Purpose Statements from ordinance

- 1.Guiding the transition of a portion of a rural mountain river valley community from rural to small town while not losing the essence of the place including farming/ranching.
- 2.Establishing an orderly land use system with a unified plan that organizes the efforts of many landowners including a continuity of street networks, open space, and critical infrastructure.
- 3.Delivering housing types that accommodate a full range of resident life cycle, lifestyles, and price points.
4. Delivering services, uses, and amenities to serve the local needs of the residents – and promote and evolve the rural economy.
- 5.Enhance quality of life through thoughtful, incremental growth by delivering improved access to outdoor amenities.
- 6.Promoting alternative modes of transportation, such as transit, pedestrian, and bike options including access to Interstate 80.

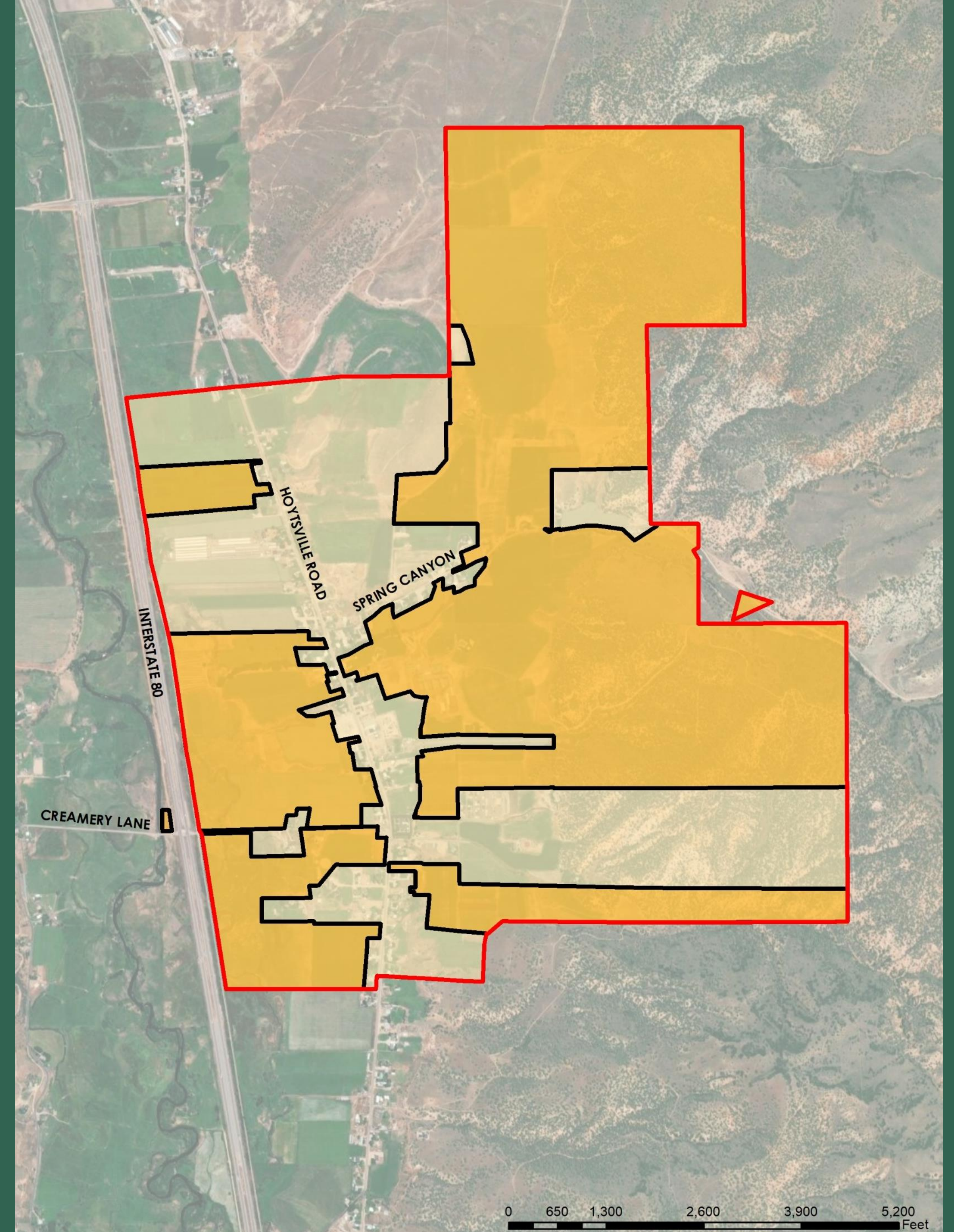
Evolution of the Idea



Ordinance Map/Planning Area

Planning Area - Red

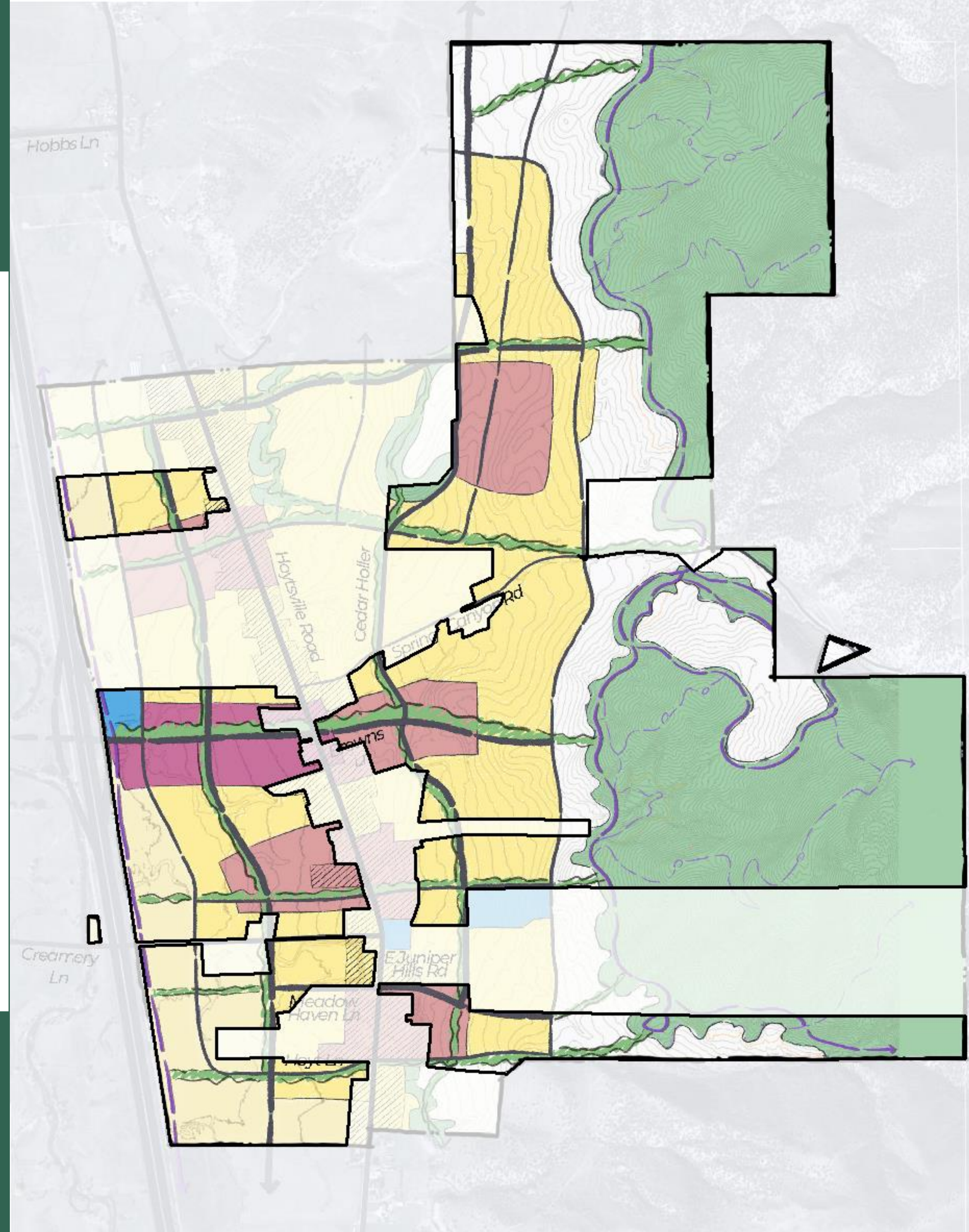
Ordinance Area – Orange with black border



Placetypes Map

LEGEND

- Village Center
- Neighborhood Center
- Neighborhood
- Meadow Clusters
- Hillside Clusters
- Civic
- Steep Slopes
- Existing and Proposed Roads



Placetypes

Village Centers	Neighborhood Centers	Neighborhoods	Hillside Clusters	Meadow Clusters	Parks and Open Space
<ul style="list-style-type: none">• Multi-Family• Retail• Office• Schools• Churches	<ul style="list-style-type: none">• Single-Family• Multi-Family• Community activities• Retail	<ul style="list-style-type: none">• Single-Family• Townhomes	<ul style="list-style-type: none">• Single-Family• Townhomes	<ul style="list-style-type: none">• Single-Family• Townhomes	<ul style="list-style-type: none">• Community parks• Natural open space• Trails• Landscape preservation• Community agriculture
					

20-25 Units/Acre

10-15 Units/Acre

3-6 Units/Acre

1-3 Units/Acre

1-3 Units/Acre