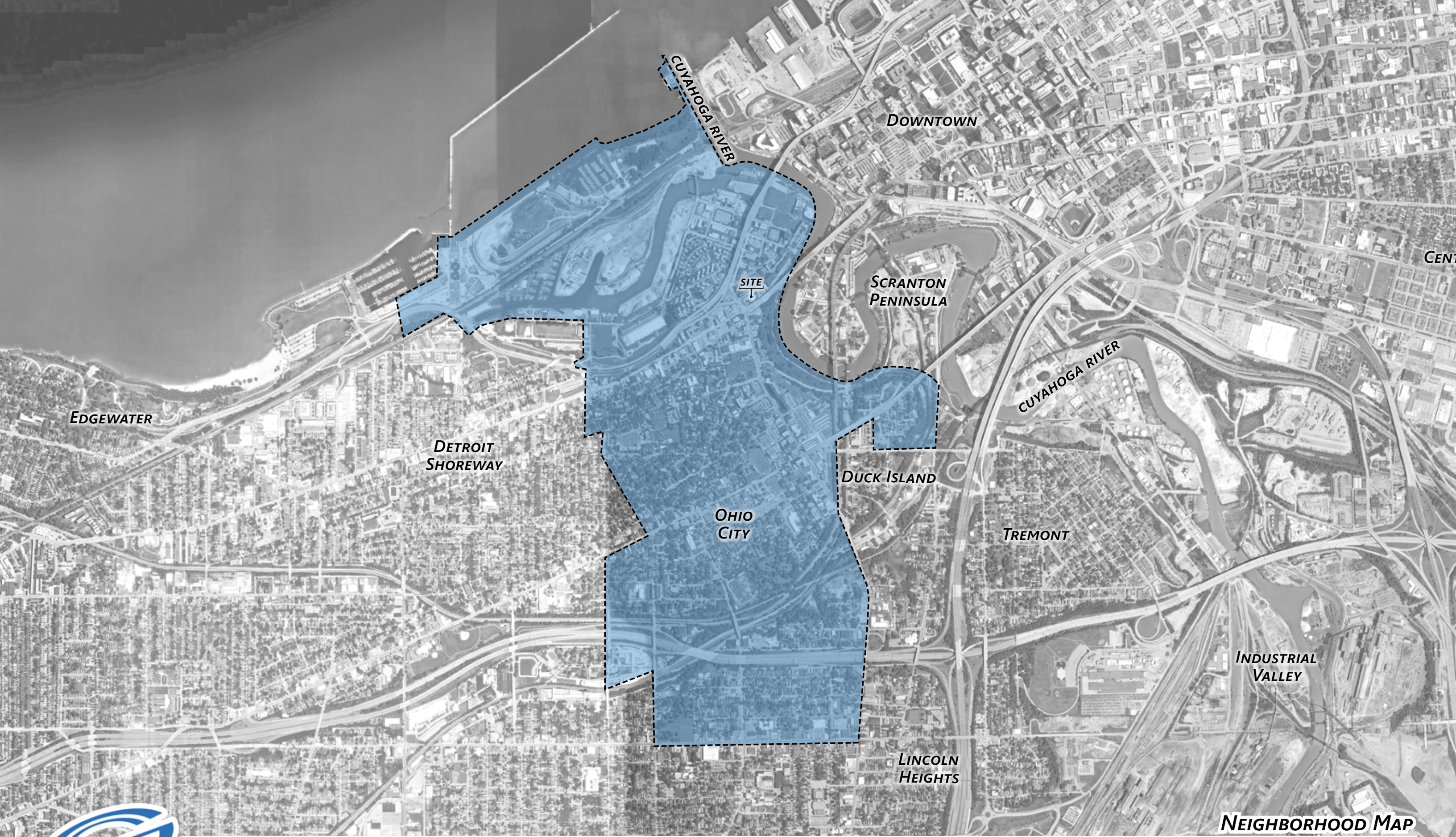


BRIDGEWORKS

HOTEL | RESIDENTIAL | RETAIL | RESTAURANT

M. PANZICA DEVELOPMENT + GRAMMAR PROPERTIES





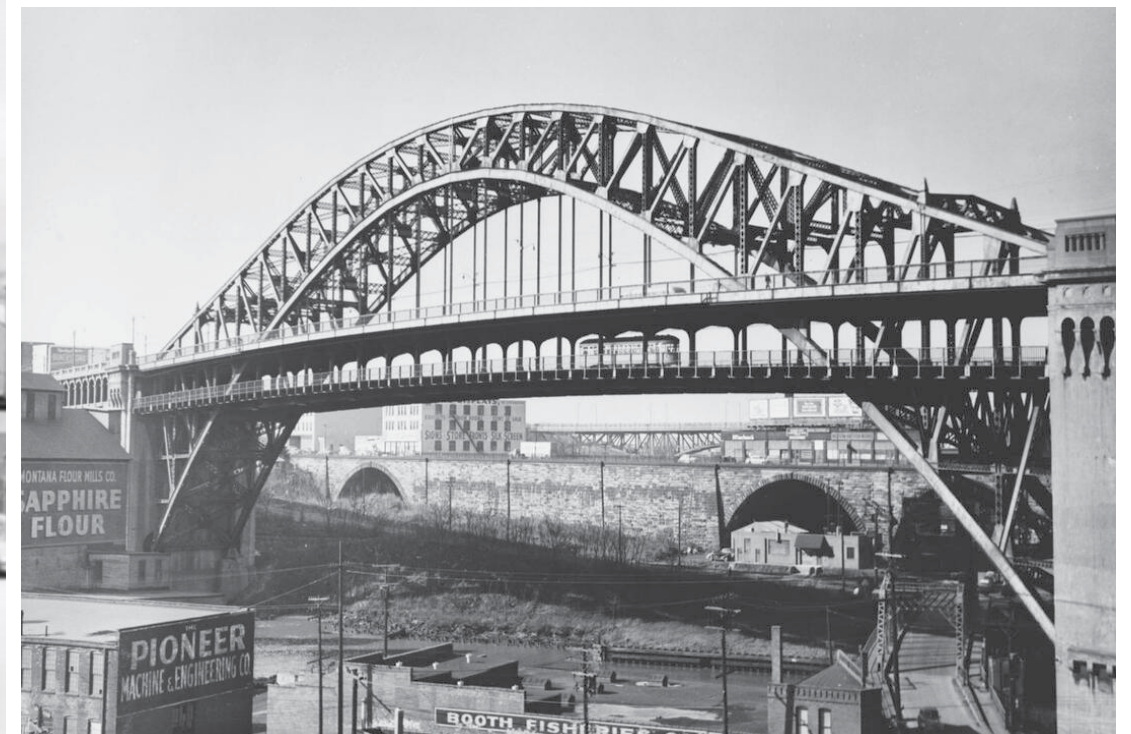
NEIGHBORHOOD MAP

BRIDGEWORKS
2429 W. SUPERIOR ST., CLEVELAND, OH



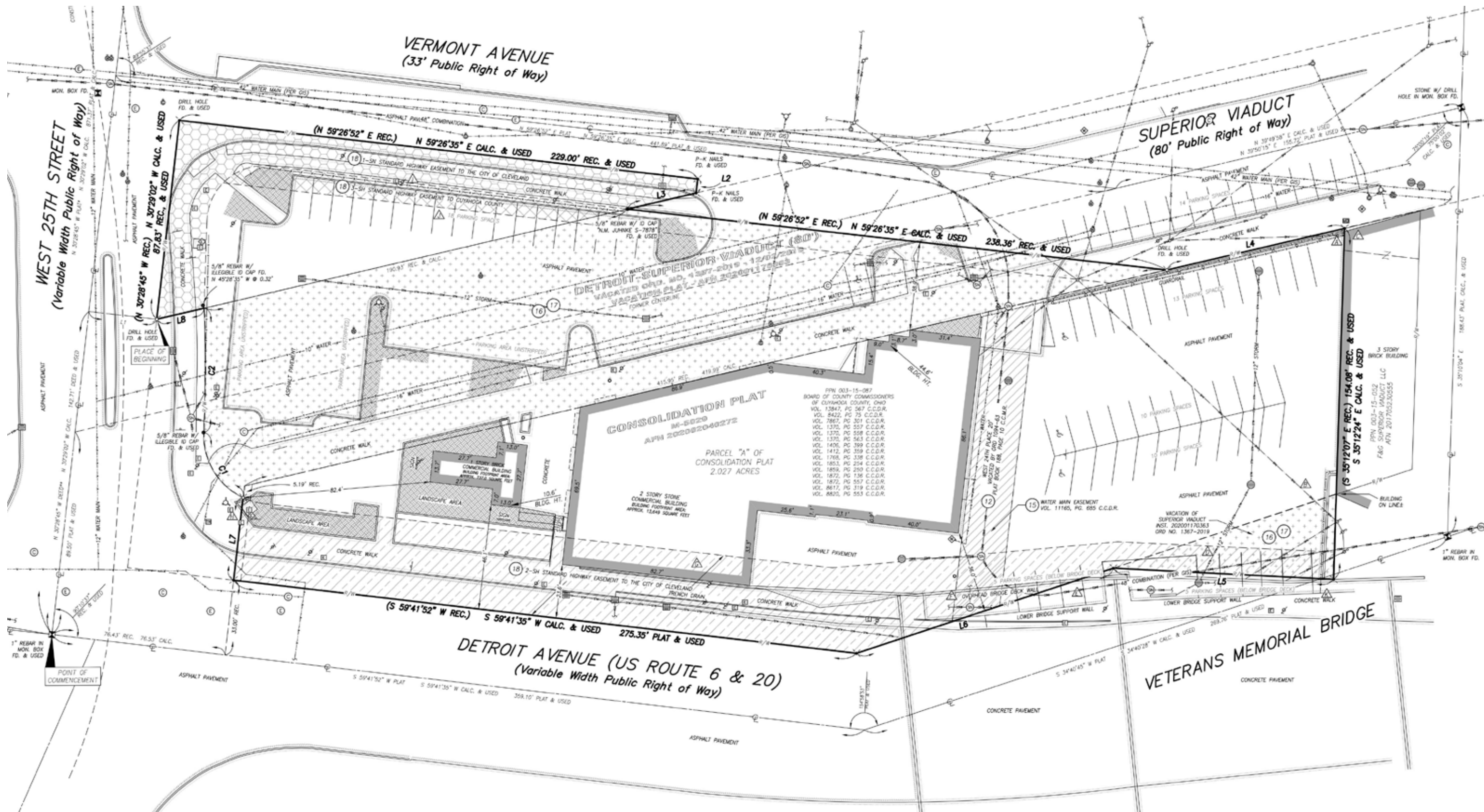
VICINITY MAP

BRIDGEWORKS
2429 W. SUPERIOR ST., CLEVELAND, OH













PROJECT DATA

OVERALL BUILDING AREAS

GROUND FLOOR	49,135 GSF
2ND FLOOR	50,549 GSF
3RD-6TH FLOORS	152,532 GSF
7TH FLOOR	34,755 GSF
TOTAL	286,971 GSF

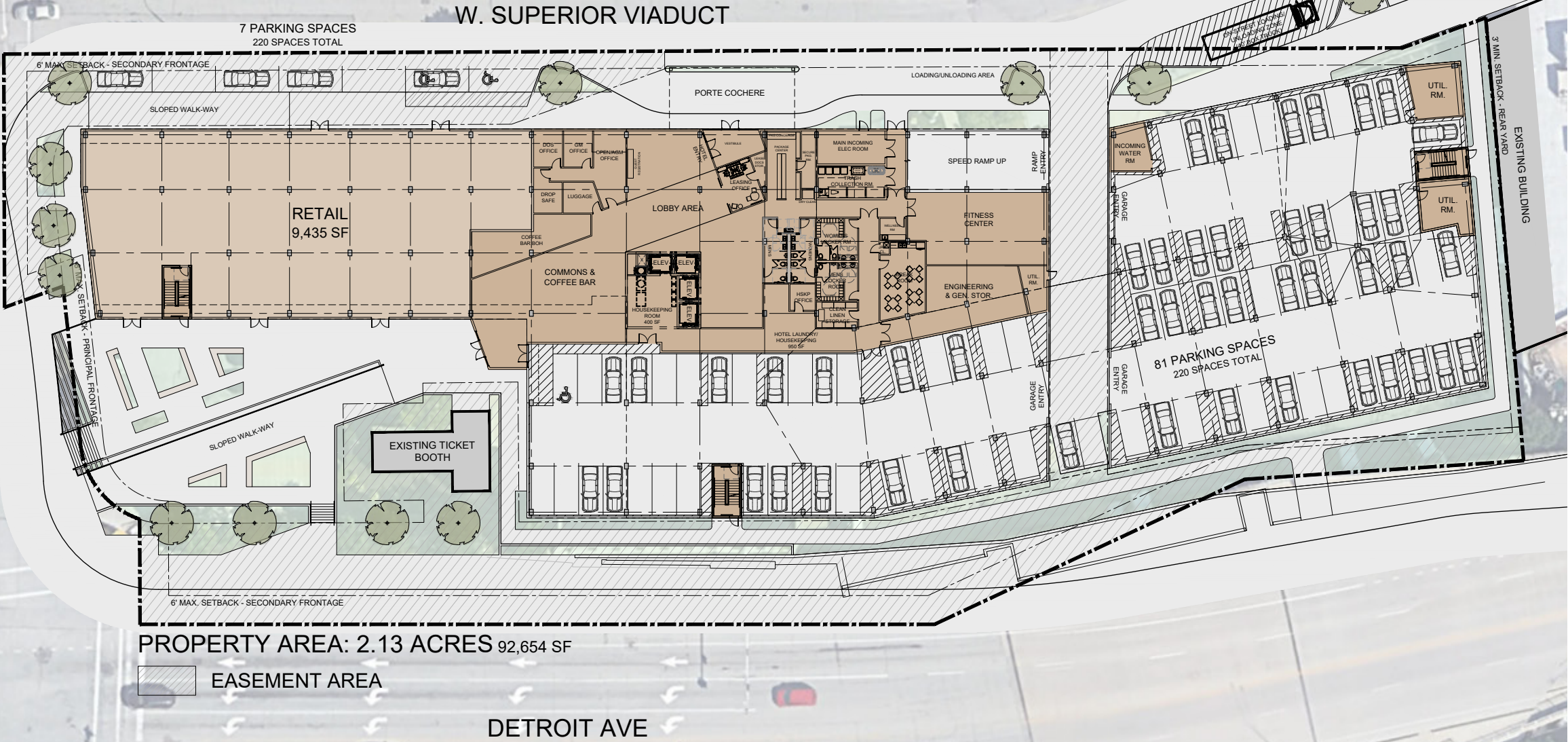
PROJECT INFORMATION

UNIT COUNT	277 UNITS
APARTMENT	145 UNITS
HOTEL	132 KEYS

AREAS	
LOBBY & AMENITY	13,462 SF
ROOF TERRACE	3,378 SF
RETAIL & RESTAURANT	14,930 SF
CIRCULATION & UTILITY	30,824 SF

HOTEL RSF	35,804 RSF
3RD - 6TH FLOORS	35,804 RSF
RESIDENTIAL RSF	113,953 RSF
3RD - 7TH FLOORS	113,953 RSF
RETAIL & RESTAURANT RSF	14,930 RSF
1ST FLOOR	14,930 RSF
TOTAL RSF	164,687 RSF

UNIT MIX	
APARTMENT	
EFFICIENCIES	4 2.8%
ONE BEDROOMS	98 67.6%
TWO BEDROOMS	43 29.7%



PROJECT DATA

OVERALL BUILDING AREAS

GROUND FLOOR	49,135 GSF
2ND FLOOR	50,549 GSF
3RD-6TH FLOORS	152,532 GSF
7TH FLOOR	34,755 GSF
<hr/>	
TOTAL	286,971 GSF

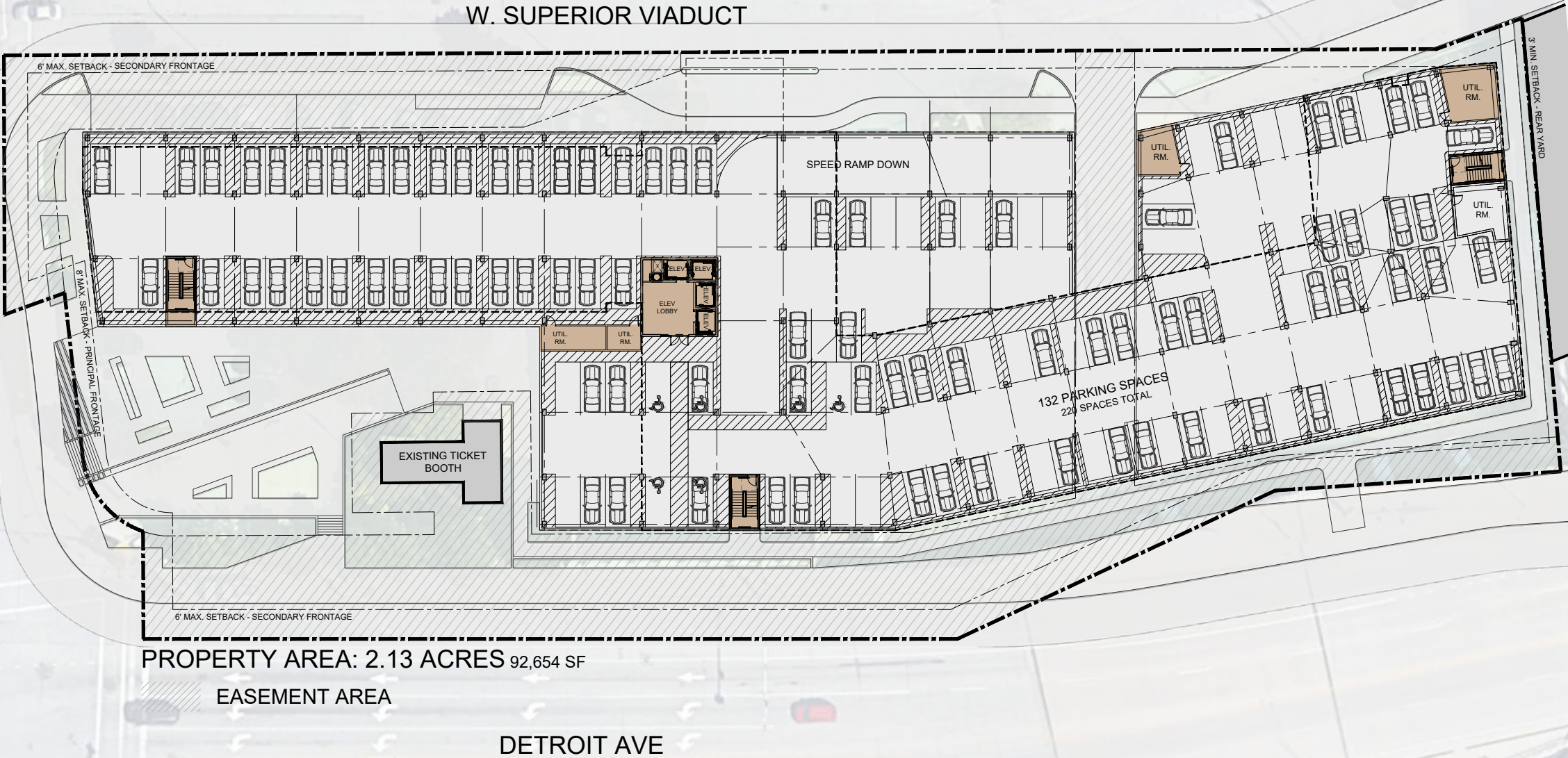
PROJECT INFORMATION

UNIT COUNT	277 UNITS
APARTMENT	145 UNITS
HOTEL	132 KEYS

AREAS	
LOBBY & AMENITY	13,462 SF
ROOF TERRACE	3,378 SF
RETAIL & RESTAURANT	14,930 SF
CIRCULATION & UTILITY	30,824 SF

HOTEL RSF	35,804 RSF
3RD - 6TH FLOORS	35,804 RSF
RESIDENTIAL RSF	113,953 RSF
3RD - 7TH FLOORS	113,953 RSF
RETAIL & RESTAURANT RSF	14,930 RSF
1ST FLOOR	14,930 RSF
<hr/>	
TOTAL RSF	164,687 RSF

UNIT MIX	
APARTMENT	
EFFICIENCIES	4 2.8%
ONE BEDROOMS	98 67.6%
TWO BEDROOMS	43 29.7%



PROJECT DATA

OVERALL BUILDING AREAS

GROUND FLOOR	49,135 GSF
2ND FLOOR	50,549 GSF
3RD-6TH FLOORS	152,532 GSF
7TH FLOOR	34,755 GSF
TOTAL	286,971 GSF

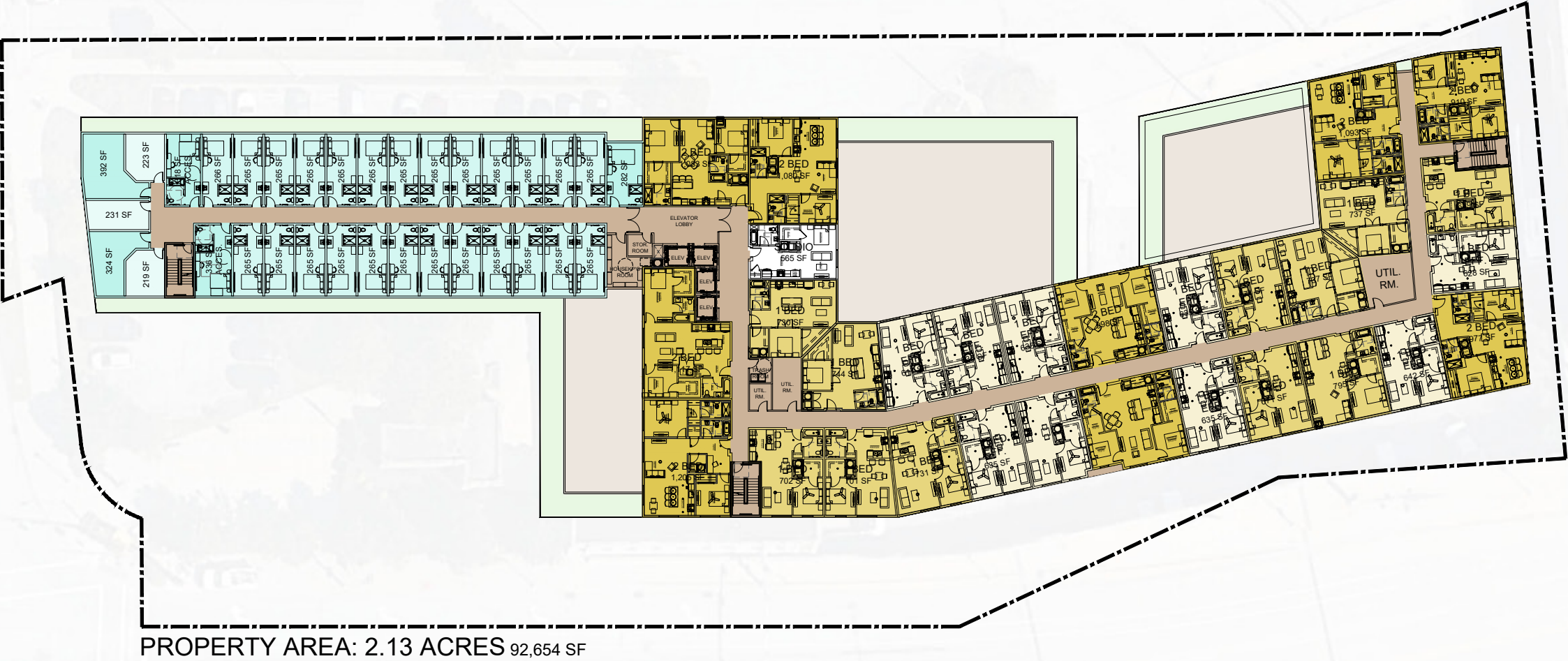
PROJECT INFORMATION

UNIT COUNT	277 UNITS
APARTMENT	145 UNITS
HOTEL	132 KEYS

AREAS	
LOBBY & AMENITY	13,462 SF
ROOF TERRACE	3,378 SF
RETAIL & RESTAURANT	14,930 SF
CIRCULATION & UTILITY	30,824 SF

HOTEL RSF	35,804 RSF
3RD - 6TH FLOORS	35,804 RSF
RESIDENTIAL RSF	113,953 RSF
3RD - 7TH FLOORS	113,953 RSF
RETAIL & RESTAURANT RSF	14,930 RSF
1ST FLOOR	14,930 RSF
TOTAL RSF	164,687 RSF

UNIT MIX	
APARTMENT	
EFFICIENCIES	4 2.8%
ONE BEDROOMS	98 67.6%
TWO BEDROOMS	43 29.7%



PROJECT DATA

OVERALL BUILDING AREAS

GROUND FLOOR	49,135 GSF
2ND FLOOR	50,549 GSF
3RD-6TH FLOORS	152,532 GSF
7TH FLOOR	34,755 GSF
TOTAL	286,971 GSF

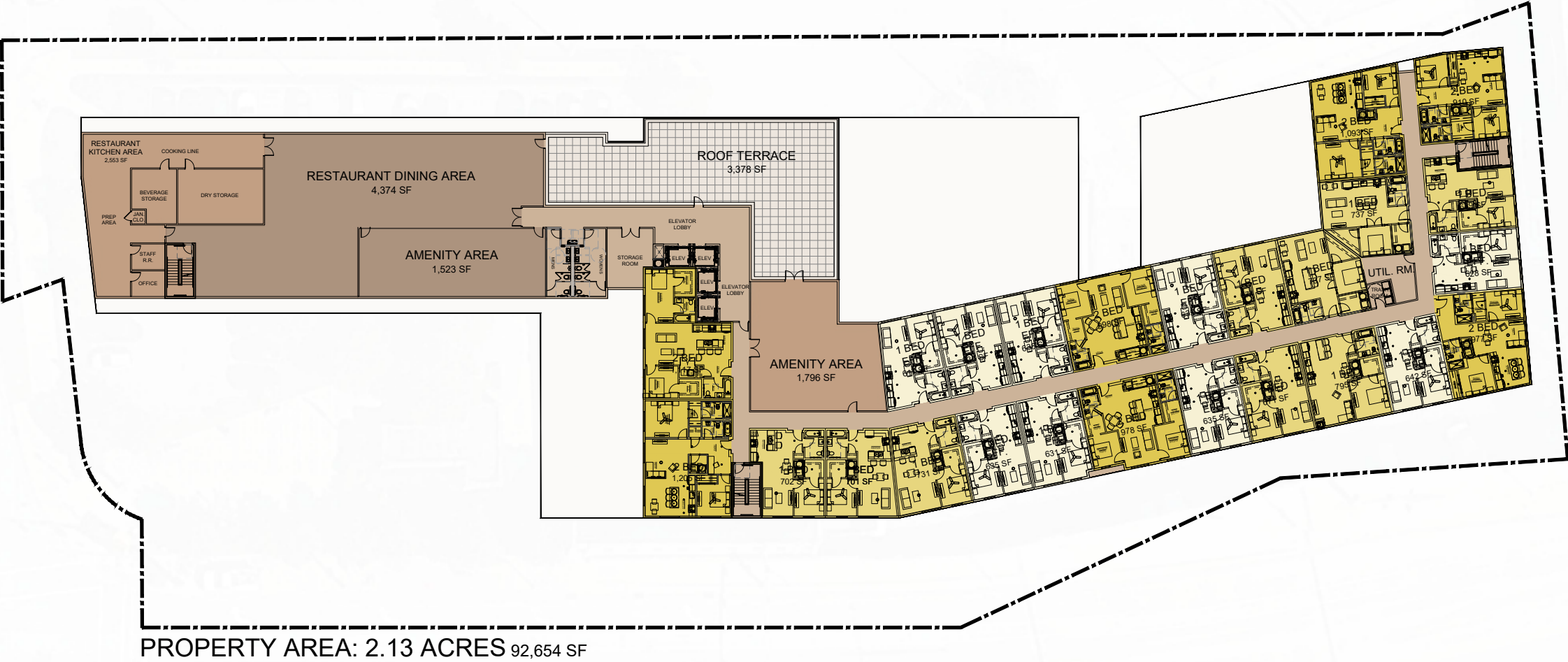
PROJECT INFORMATION

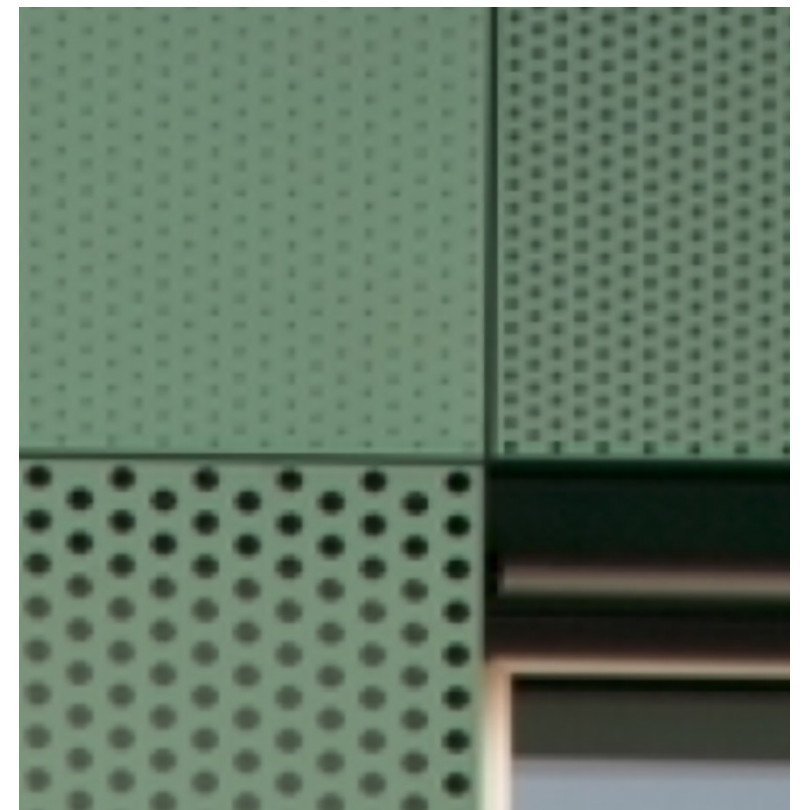
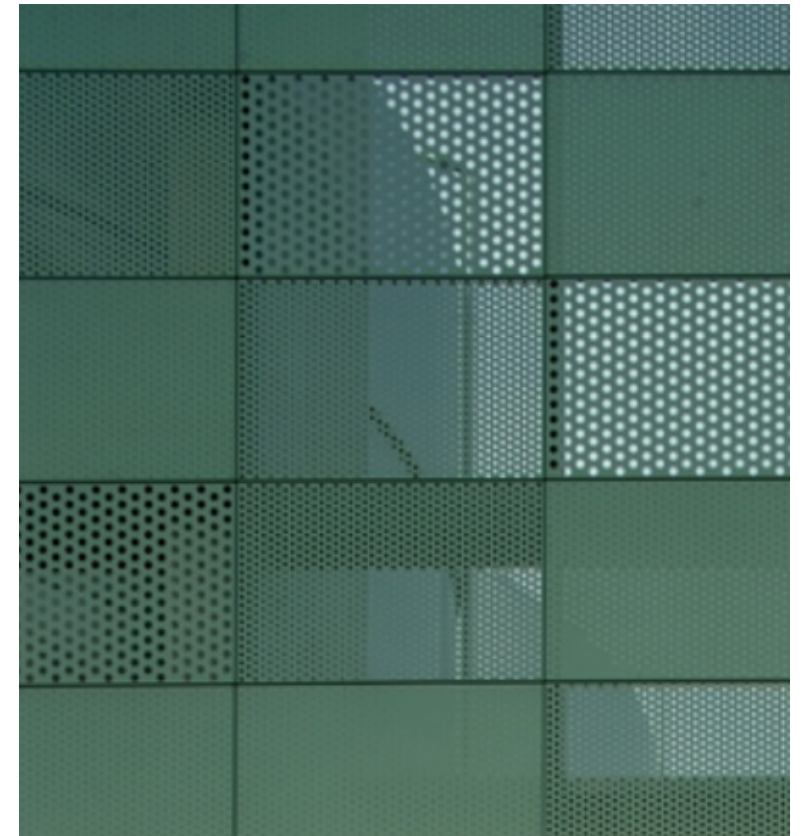
UNIT COUNT	277 UNITS
APARTMENT	145 UNITS
HOTEL	132 KEYS

AREAS	
LOBBY & AMENITY	13,462 SF
ROOF TERRACE	3,378 SF
RETAIL & RESTAURANT	14,930 SF
CIRCULATION & UTILITY	30,824 SF

HOTEL RSF	35,804 RSF
3RD - 6TH FLOORS	35,804 RSF
RESIDENTIAL RSF	113,953 RSF
3RD - 7TH FLOORS	113,953 RSF
RETAIL & RESTAURANT RSF	14,930 RSF
1ST FLOOR	14,930 RSF
TOTAL RSF	164,687 RSF

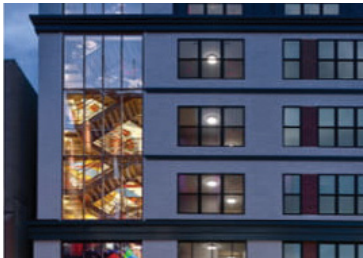
UNIT MIX	
APARTMENT	
EFFICIENCIES	4 2.8%
ONE BEDROOMS	98 67.6%
TWO BEDROOMS	43 29.7%



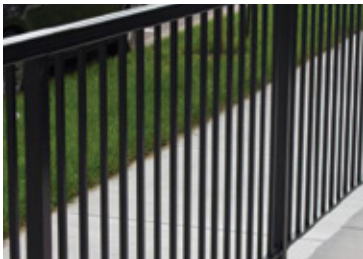




STOREFRONTS
ANODIZED ALUMINUM
"BLACK"



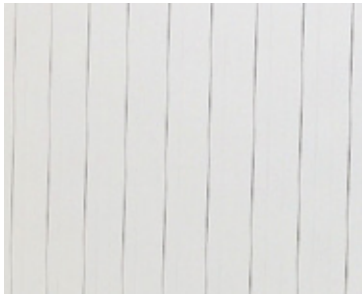
WINDOWS
ANODIZED ALUMINUM
"BLACK"



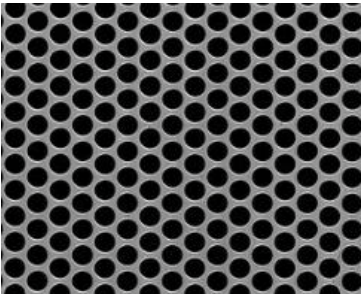
RAILING
ANODIZED ALUMINUM
"BLACK"



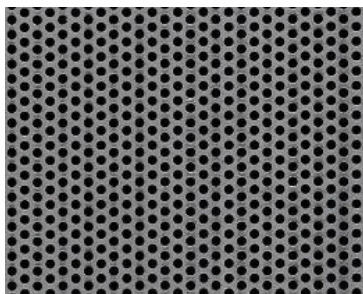
SHERWIN WILLIAMS
PAINT - SW 9041
"PARISIAN PATINA"



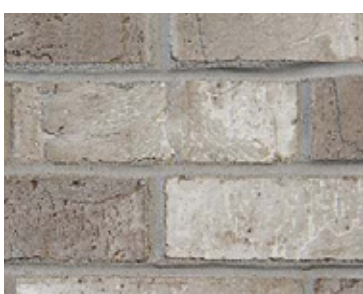
DMI 12" VERTICAL FLUSH
METAL PANEL
IN CUSTOM SW 9041
"PARISIAN PATINA"



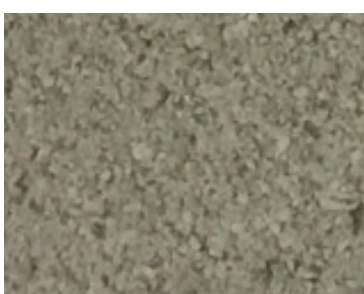
McNICHOLS PERFORATED
METAL PANEL PAINTED IN
CUSTOM SW 9041
"PARISIAN PATINA"



McNICHOLS PERFORATED
METAL PANEL PAINTED IN
CUSTOM SW 9041
"PARISIAN PATINA"



SUMMIT MODULAR BRICK
"SMOKEY MOUNTAIN"



SMOOTH FACE
CMU
"NATURAL GRAY"



WINDOWS, DOORS &
STOREFRONTS
"BLACK ANODIZED"











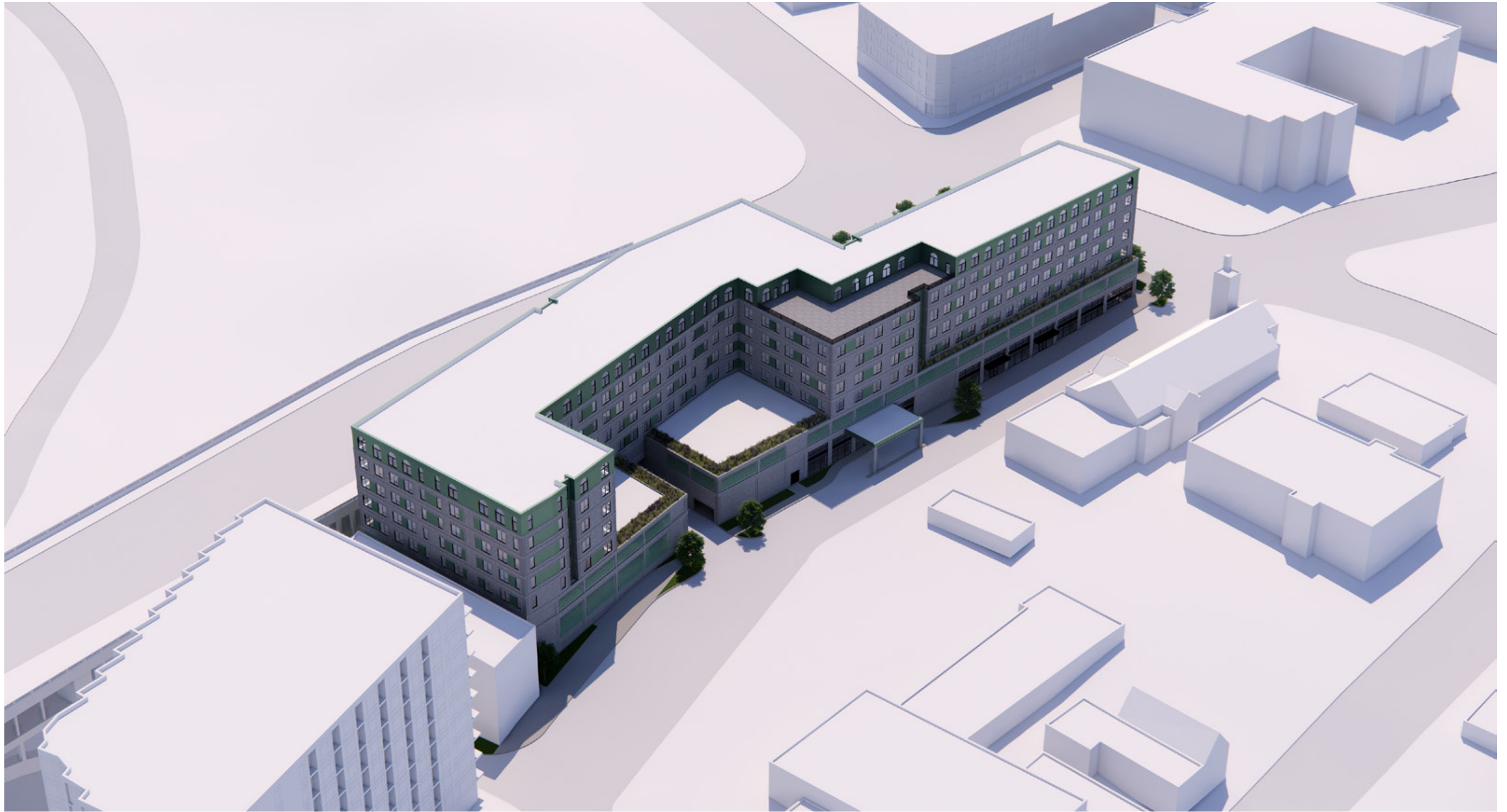




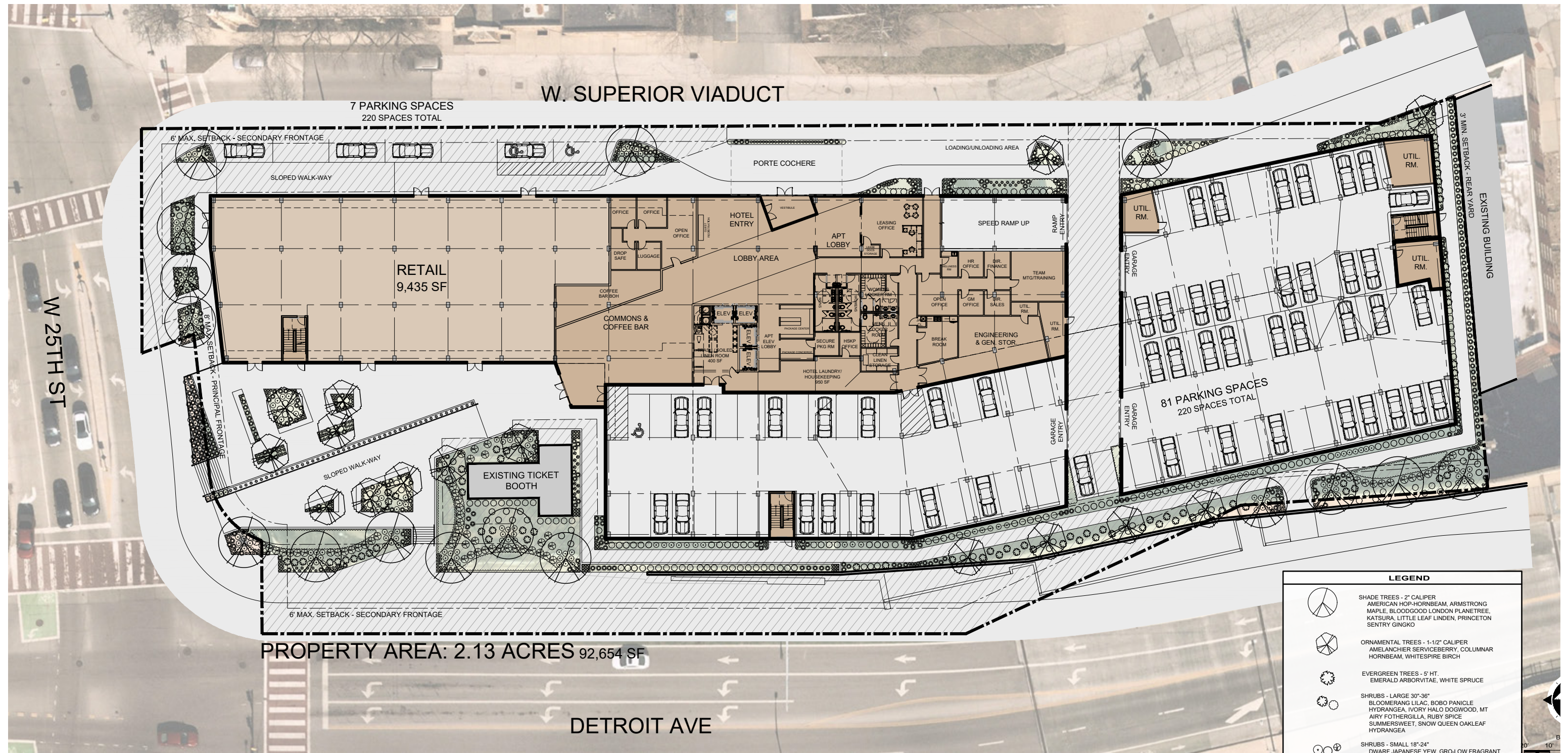














COLUMINAR MAPLE



COLUMINAR GINKO



COLUMINAR HORNBEAM



PARROTIA



LONDON PLANE TREE



HORNBEAM



SERVICEBERRY



EASTERN RED CEDAR



EMERALD ARBOVITAE



JUNIPER



WINTERBERRY



DWARF FOTHERGILLA



PURPLELEAF WINTERCREEPER



BLUE LYME GRASS



SWITCHGRASS



NINEBARK



GRO LOW SUMAC



CLETHERA



HYDRANGEA



SWEETSPIRE



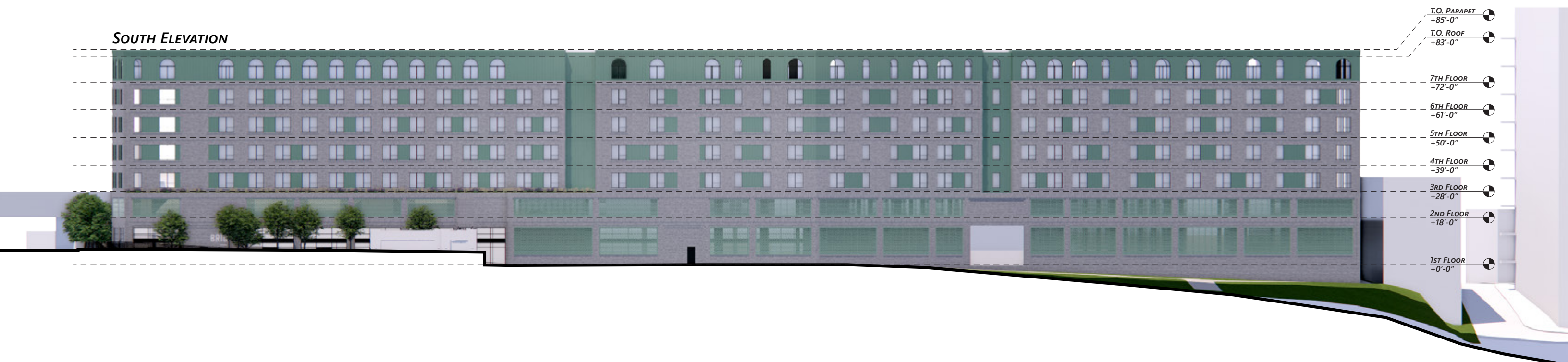
LAVENDAR



LIRIOPE



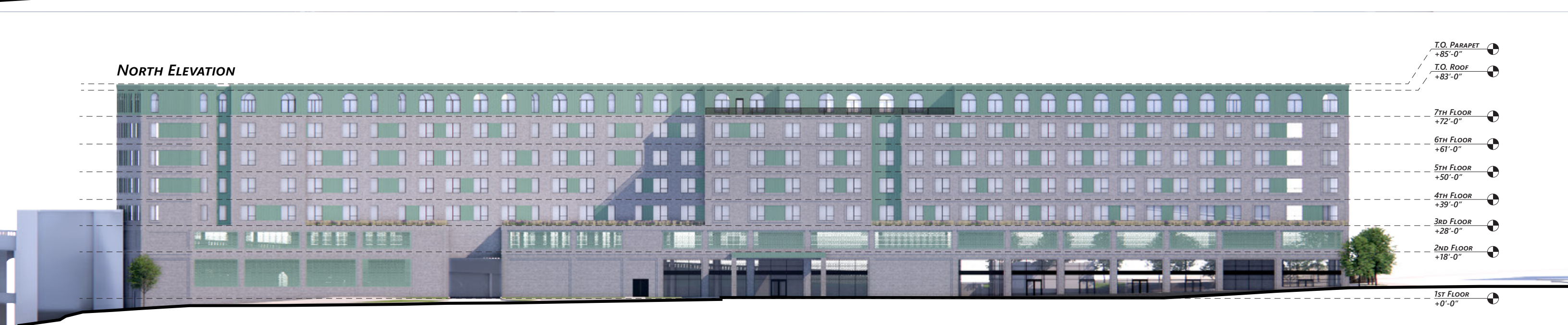
LADYS MANTLE





EAST ELEVATION

- T.O. PARAPET +85'-0"
- T.O. ROOF +83'-0"
- 7TH FLOOR +72'-0"
- 6TH FLOOR +61'-0"
- 5TH FLOOR +50'-0"
- 4TH FLOOR +39'-0"
- 3RD FLOOR +28'-0"
- 2ND FLOOR +18'-0"
- 1ST FLOOR +0'-0"



NORTH ELEVATION

- T.O. PARAPET +85'-0"
- T.O. ROOF +83'-0"
- 7TH FLOOR +72'-0"
- 6TH FLOOR +61'-0"
- 5TH FLOOR +50'-0"
- 4TH FLOOR +39'-0"
- 3RD FLOOR +28'-0"
- 2ND FLOOR +18'-0"
- 1ST FLOOR +0'-0"