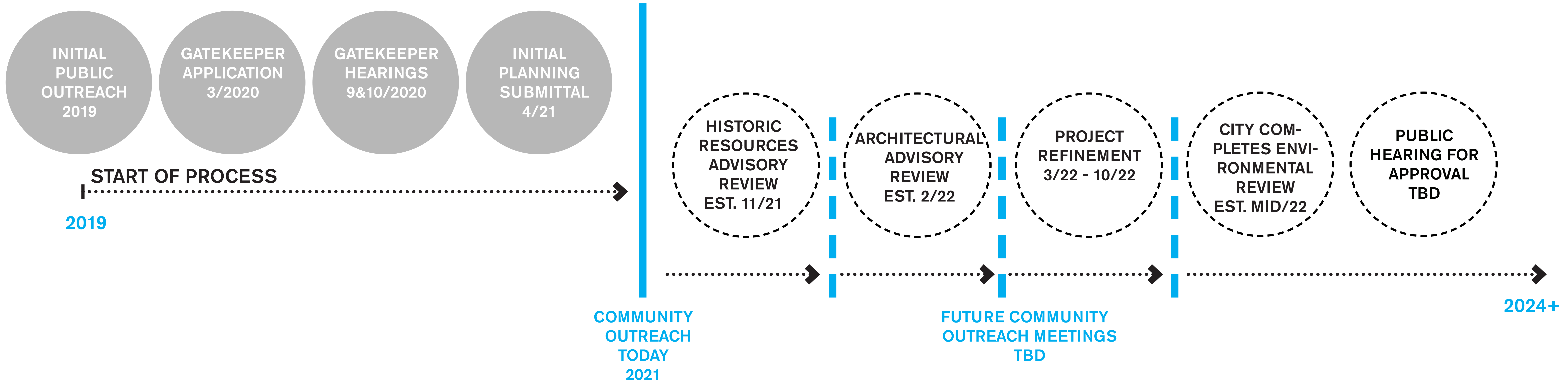
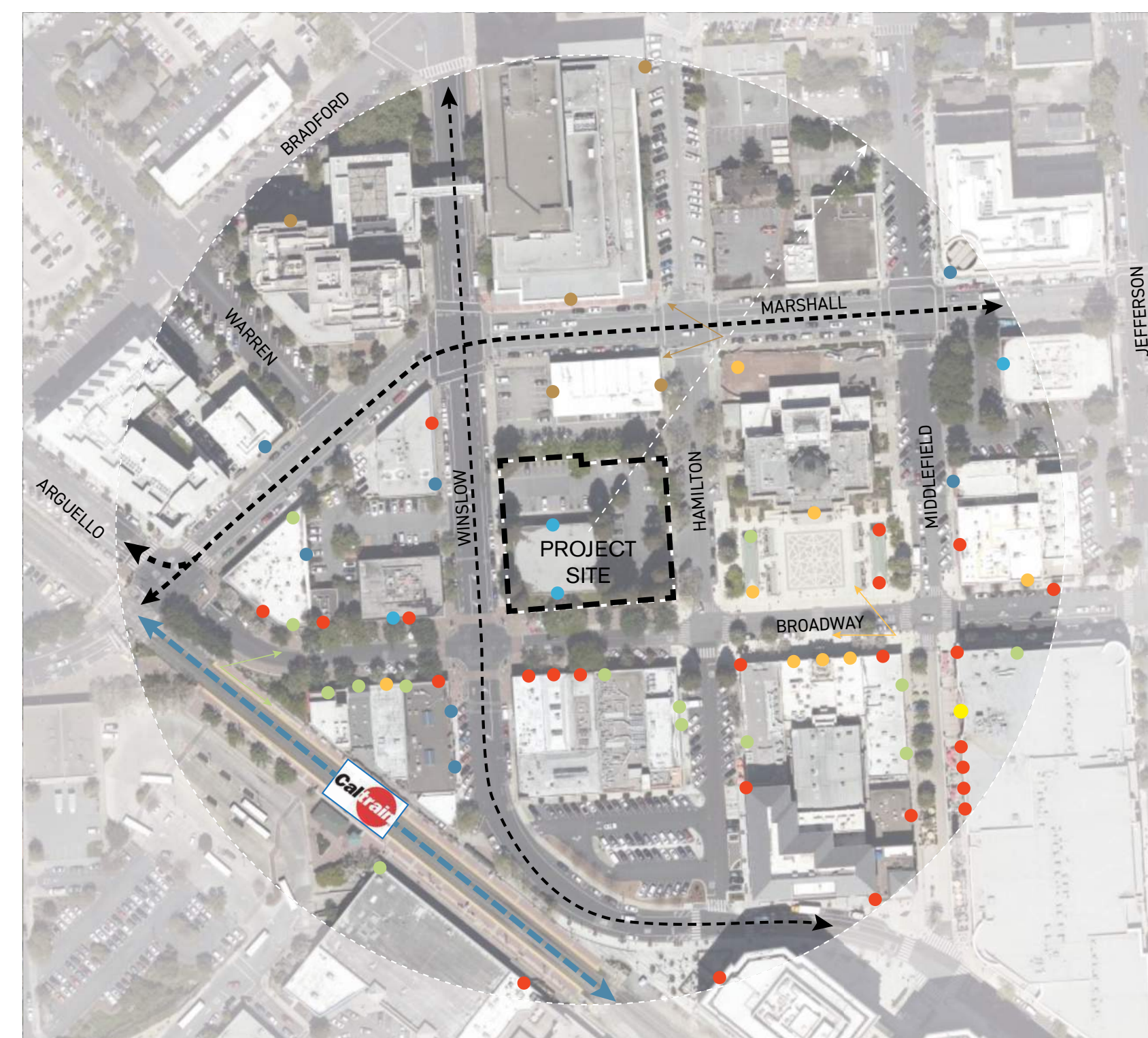


INFORM | WHERE WE ARE & WHAT WE KNOW

PROCESS



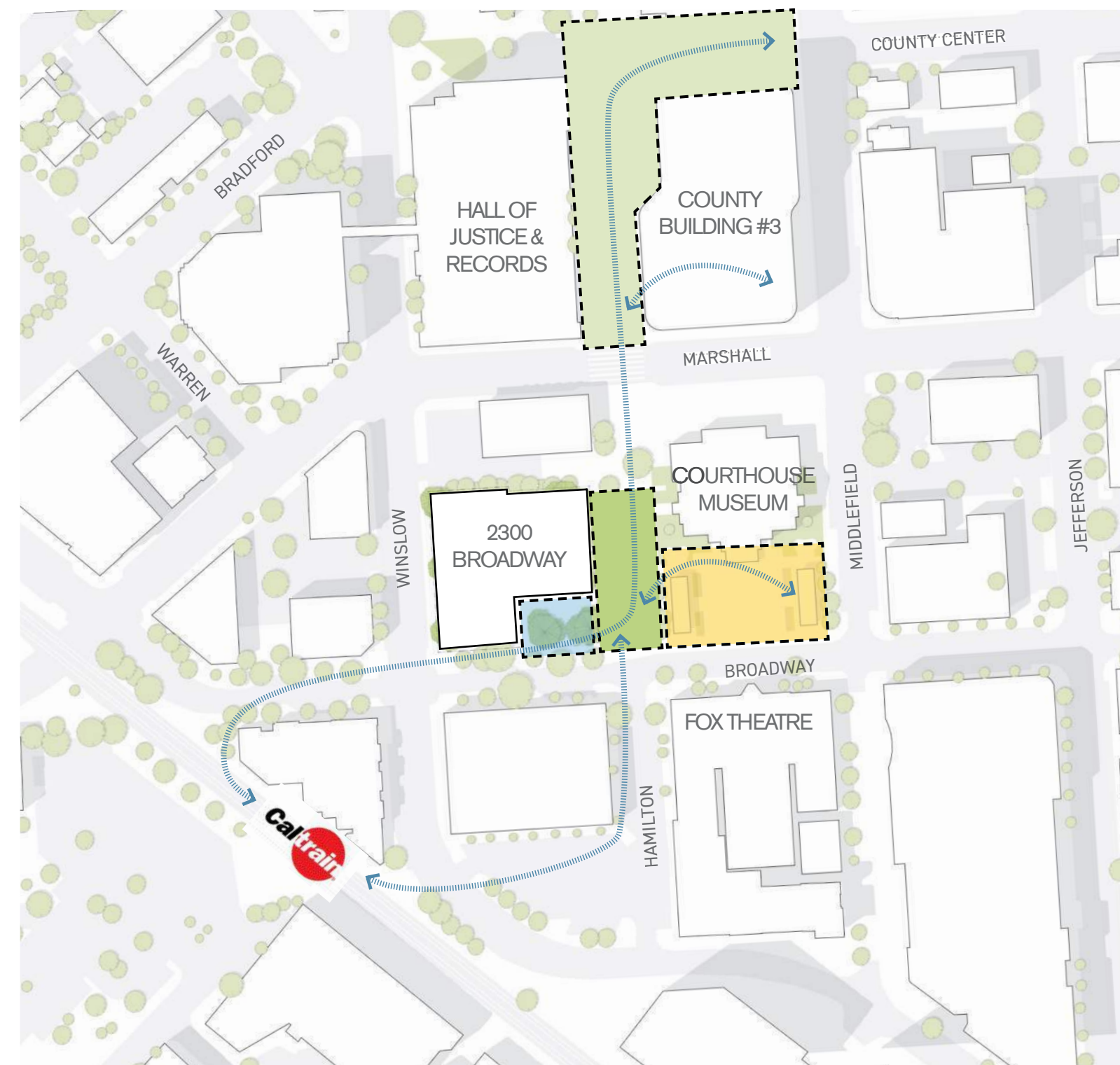
PLANNING



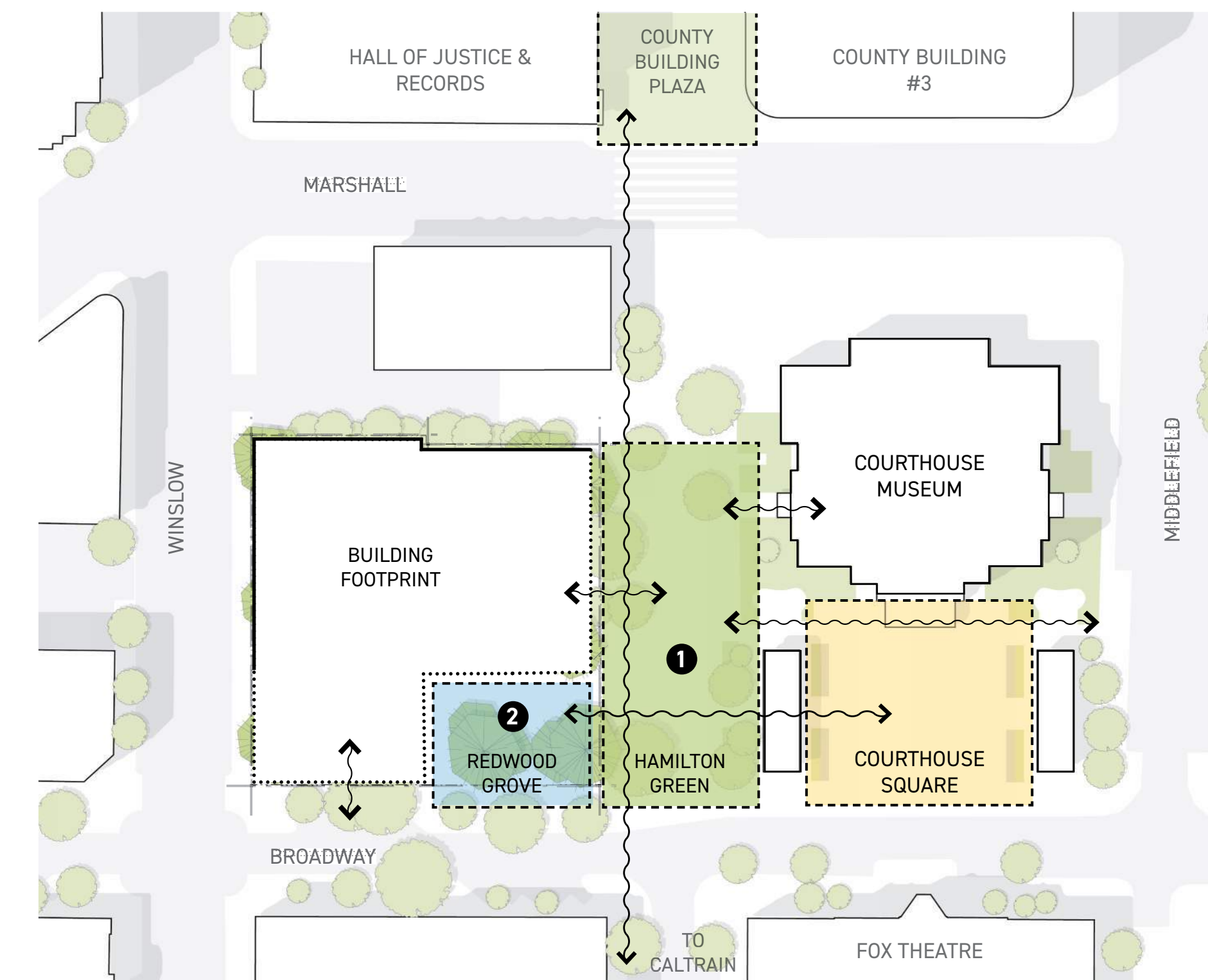
This context map illustrates the current distribution of active uses along Broadway and the Project's proximity to CalTrain. We can see from the current uses on site that this block is under-contributing to the rich life of Broadway.

This project intends to bring active uses, public outdoor space, family-friendly program, and a compelling streetscape to both Broadway and Hamilton Street. This will allow the block to contribute its fullest potential to the character of Broadway and downtown Redwood City.

- Food / Cafe
- Civic / Cultural
- Entertainment
- Retail
- Bank
- Professional
- County



The Project has multiple opportunities to build upon Redwood City's pedestrian-friendly and regionally-connected potential. Creating a pedestrian only Hamilton Green and linking it to the larger pedestrian pathway from Caltrain to County and office buildings creates a safe transit oriented arrival into downtown.

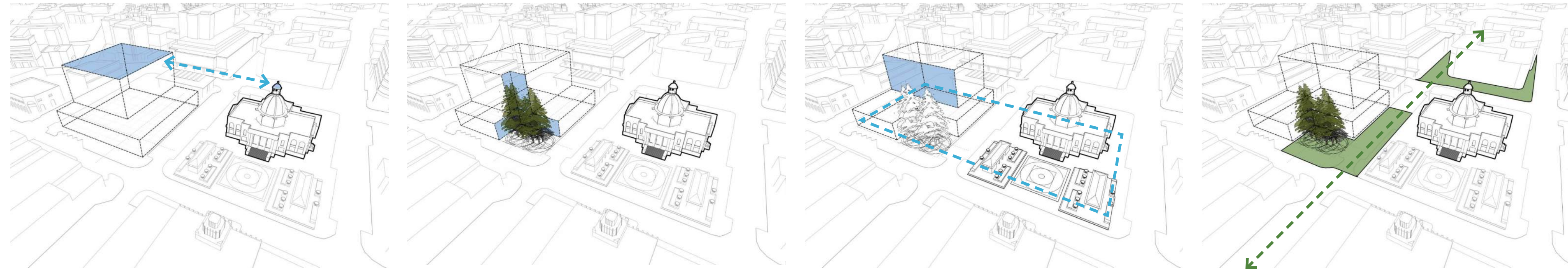


The Project will work with the City and community to create new publicly-accessible spaces that support the current offerings of Courthouse Square. These will stand alone as memorable places, Redwood Grove & Hamilton Green, and will stitch respectfully into their context to support a Downtown which is more than the sum of its parts. These two publicly-accessed spaces will be at ground level, accessible and barrier-free, and contribute much to the public realm.

- 1 Hamilton Green**
Envisioned as a pedestrian-only public space to support Courthouse Square, the Project will work with the city's Parks, Recreation and Community Services to develop a space that meets the city's needs for downtown green space and contributes meaningfully to public life.
- 2 Redwood Grove**
By saving and improving upon the current Redwood trees at the Southeast corner of the site, the Project will create roughly 5000 sf of naturally-landscaped public outdoor space that will allow the community better interaction with the trees, their shade, and their lovely understory.

GOALS

RESPOND TO PLACE



Respect Courthouse Museum

Downtown Precise Plan allows 136' height, the Project proposes 112' to respect the height of Courthouse Museum, a precedent that has been set by the community in other nearby projects.

Save existing Coast Redwoods

Downtown Precise Plan does not allow setbacks at grade, however, the Project proposes saving the beloved Coast Redwoods.

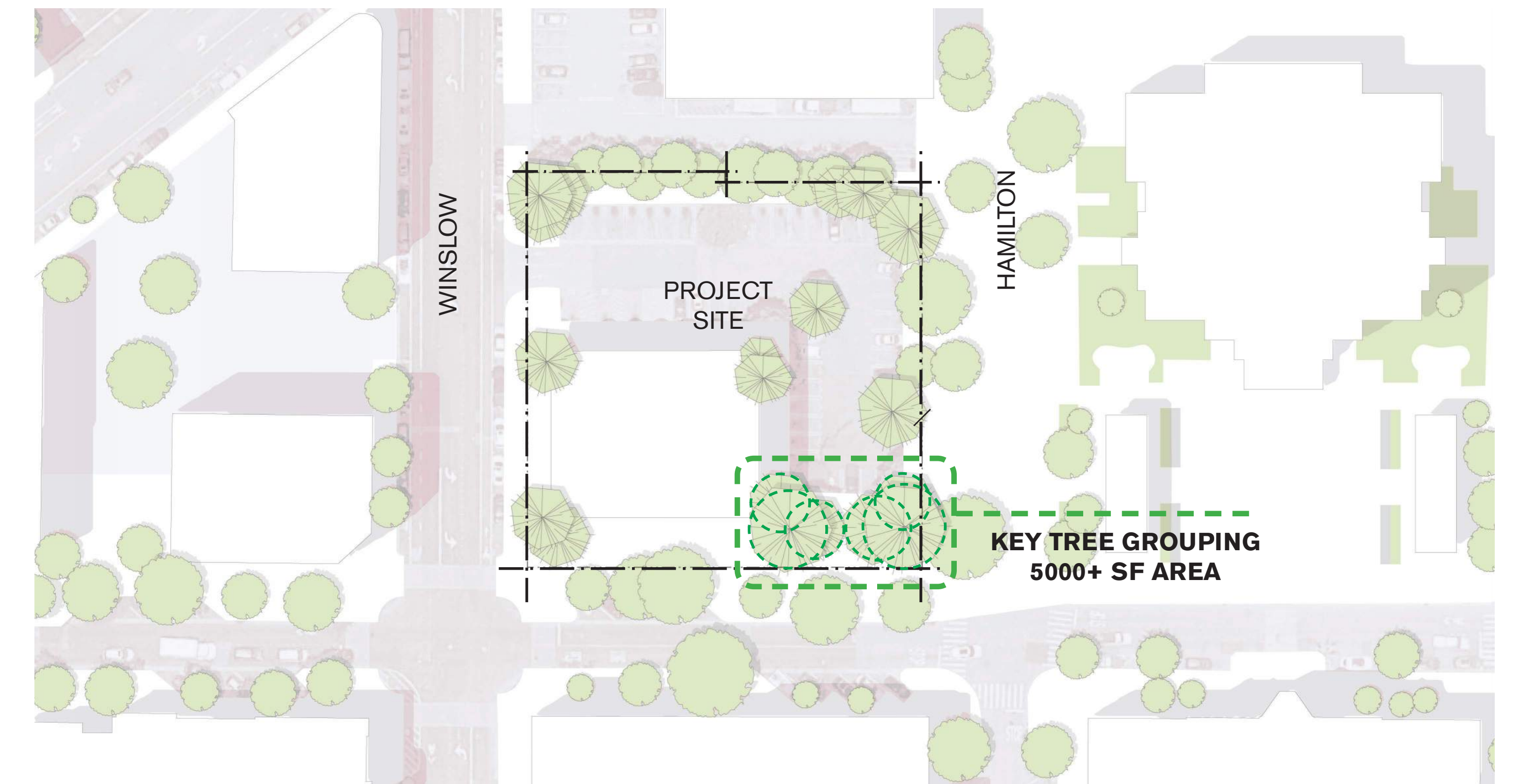
Frame the Square

Upper stories of the Project should step back to frame Redwood Grove and Courthouse Square.

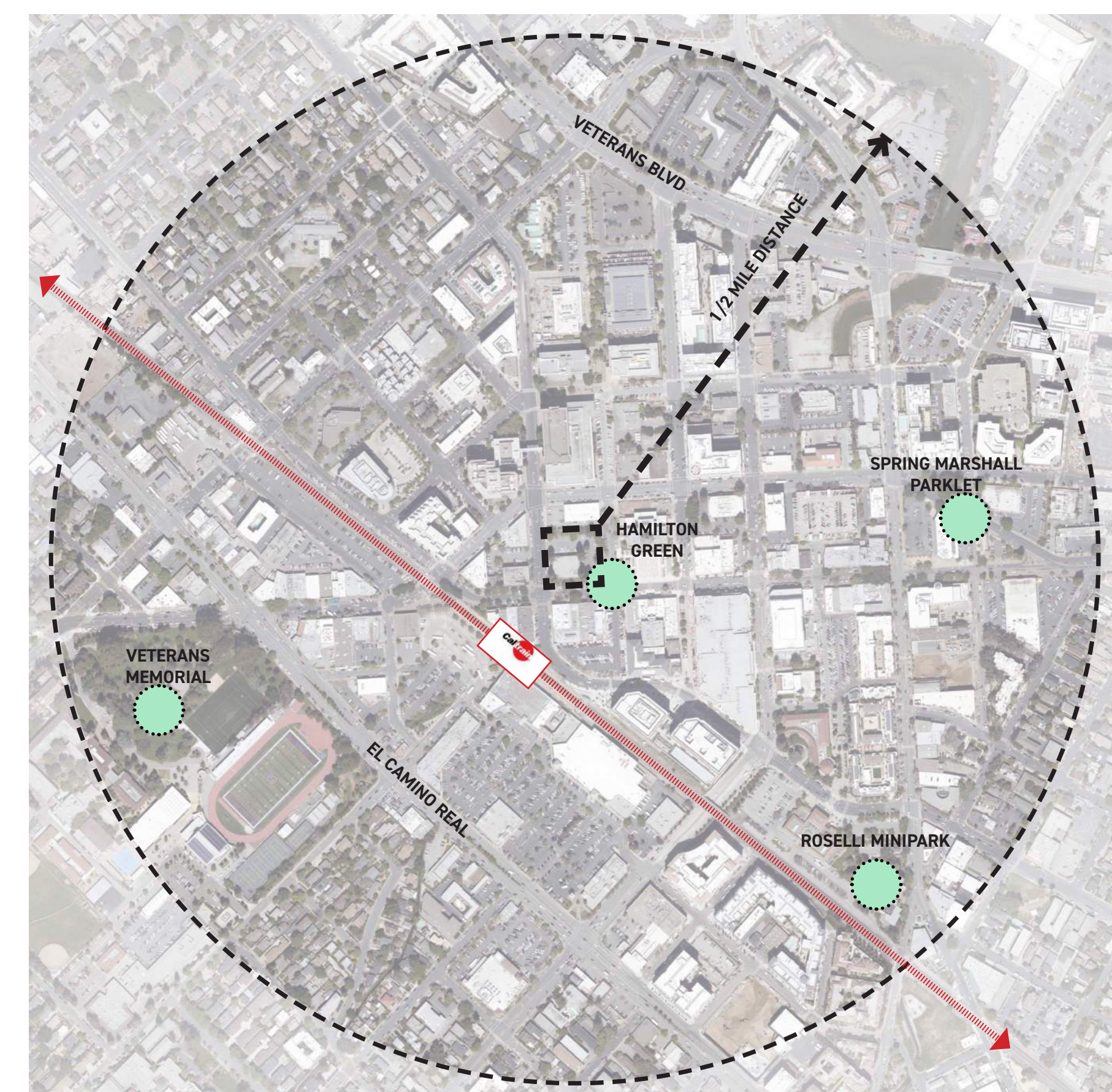
Create and Link Green Space

Strengthening walkability, the Project creates Hamilton Green as a pedestrian only connection to Caltrain.

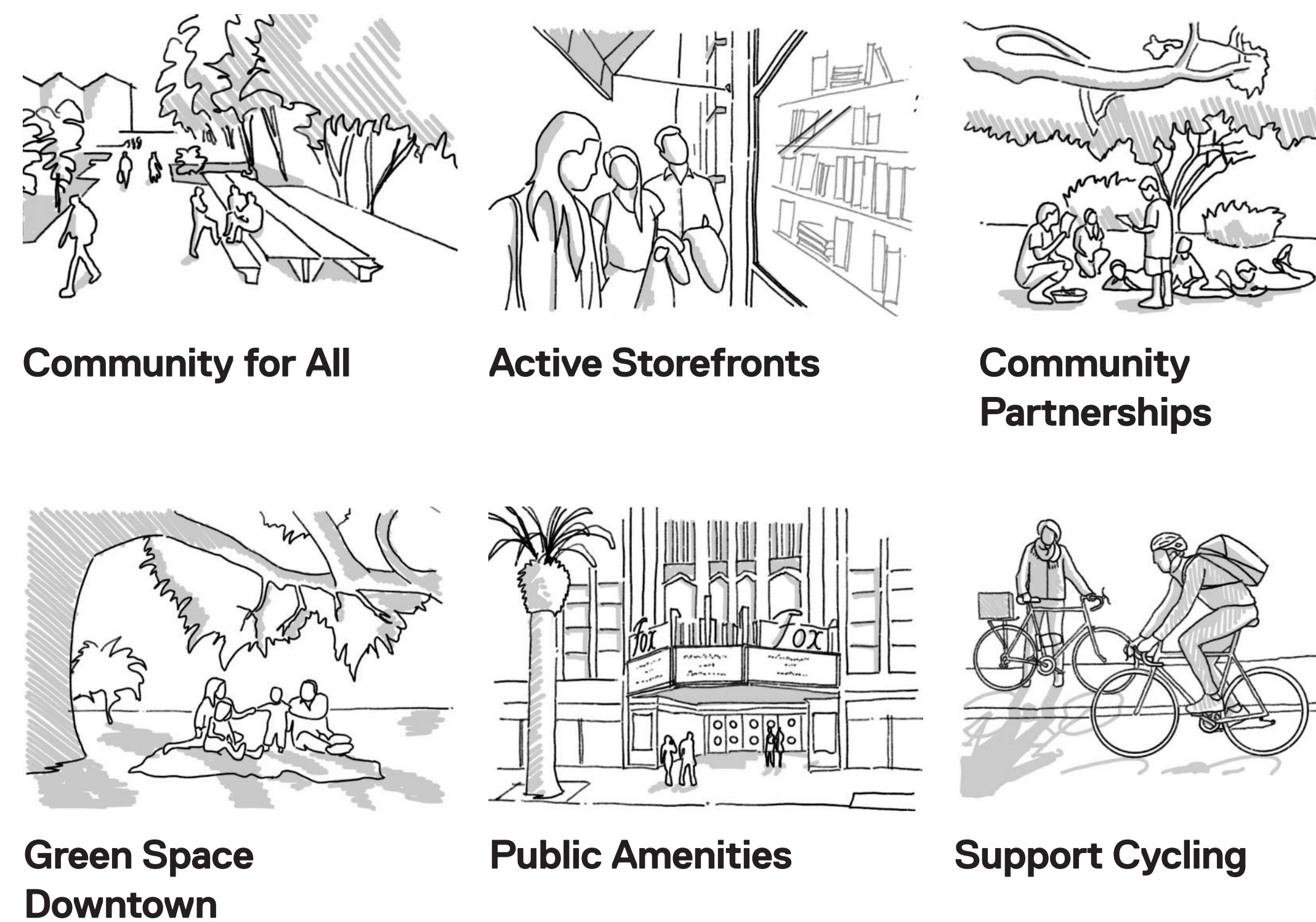
PRESERVE THE REDWOOD GROVE



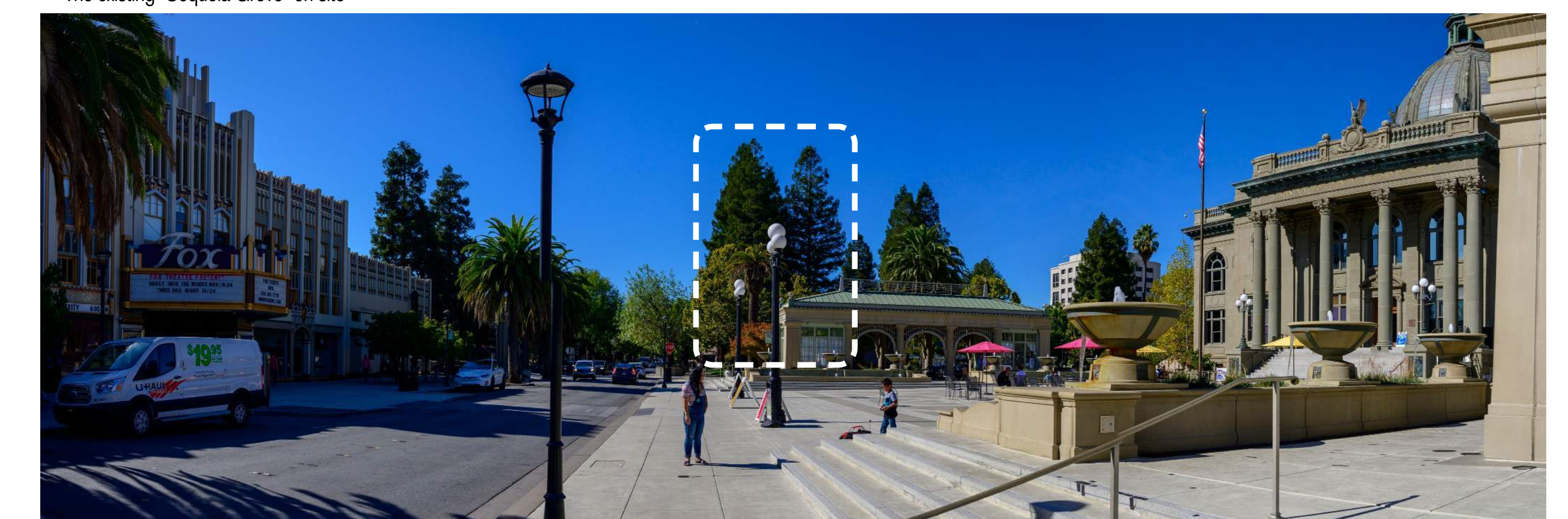
CREATE GREEN SPACE DOWNTOWN



CREATE COMMUNITY BENEFITS



The existing "Sequoia Grove" on site



The existing "Sequoia Grove" from across Courthouse Square



View of Hamilton Green from Hamilton / Broadway



View along Hamilton



View along Broadway



View from Courthouse Plaza kiosk